

Product datasheet for **TA341099**

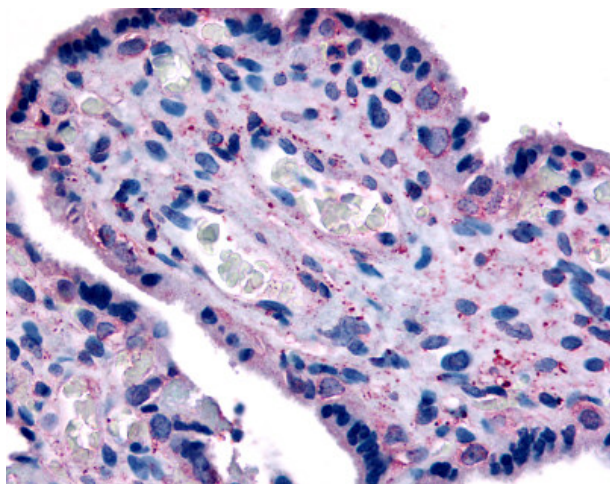
SLC7A5 Rabbit Polyclonal Antibody

Product data:

Product Type:	Primary Antibodies
Applications:	IHC
Recommended Dilution:	IHC-P (20 µg/ml)
Reactivity:	Human
Host:	Rabbit
Clonality:	Polyclonal
Immunogen:	SLC7A5 / CD98 antibody was raised against synthetic 14 amino acid peptide from N-terminus of human SLC7A5. Percent identity with other species by BLAST analysis: Human, Gorilla, Gibbon, Marmoset, Dog, Elephant, Rabbit, Platypus (100%); Opossum (93%); Mouse, Rat, Bat, Hamster, Panda, Chicken (86%).
Formulation:	PBS, 0.1% sodium azide.
Concentration:	lot specific
Purification:	Immunoaffinity purified
Conjugation:	Unconjugated
Storage:	Store at -20°C as received.
Stability:	Stable for 12 months from date of receipt.
Gene Name:	solute carrier family 7 member 5
Database Link:	NP_003477 Entrez Gene 8140 Human Q01650
Synonyms:	4F2LC; CD98; D16S469E; E16; hLAT1; LAT1; MPE16
Protein Families:	Druggable Genome, Transmembrane



[View online »](#)

Product images:

Anti-SLC7A5 antibody IHC of human placenta. Immunohistochemistry of formalin-fixed, paraffin-embedded tissue after heat-induced antigen retrieval.