

## Product datasheet for **TA341075**

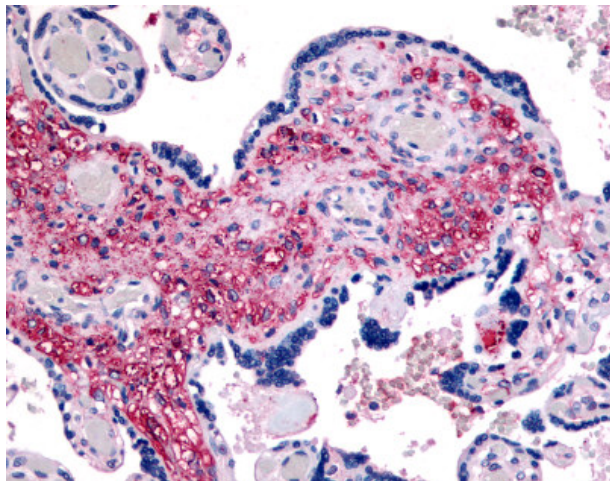
### NET1 Rabbit Polyclonal Antibody

#### Product data:

Product Type:	Primary Antibodies
Applications:	IHC
Recommended Dilution:	IHC-P (9 µg/ml)
Reactivity:	Human (Predicted: Monkey)
Host:	Rabbit
Clonality:	Polyclonal
Immunogen:	NET1 antibody was raised against synthetic 13 amino acid peptide from near C-terminus of human NET1. Percent identity with other species by BLAST analysis: Human, Gorilla (100%); Orangutan, Marmoset (92%); Gibbon, Monkey (85%).
Formulation:	PBS, 0.1% sodium azide.
Concentration:	lot specific
Purification:	Immunoaffinity purified
Conjugation:	Unconjugated
Storage:	Store at -20°C as received.
Stability:	Stable for 12 months from date of receipt.
Gene Name:	neuroepithelial cell transforming 1
Database Link:	<a href="#">NP_005854</a> <a href="#">Entrez Gene 712080 Monkey</a> <a href="#">Entrez Gene 10276 Human</a> <a href="#">Q7Z628</a>
Synonyms:	ARHGEF8; NET1A
Protein Families:	Druggable Genome



[View online »](#)

**Product images:**

Anti-NET1 antibody IHC of human placenta. Immunohistochemistry of formalin-fixed, paraffin-embedded tissue after heat-induced antigen retrieval.