

Product datasheet for **TA341074**

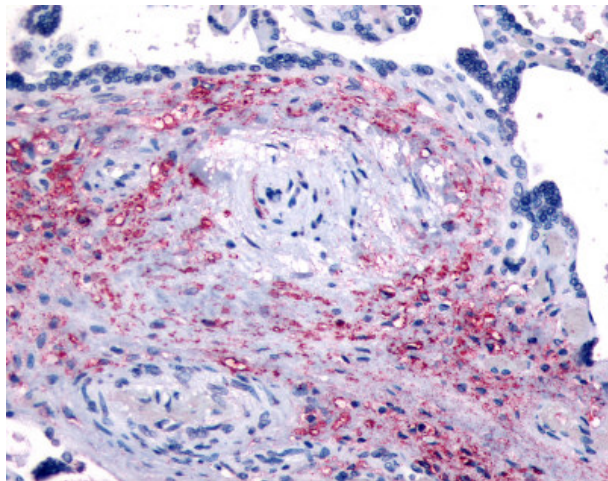
NET1 Rabbit Polyclonal Antibody

Product data:

Product Type:	Primary Antibodies
Applications:	IHC
Recommended Dilution:	IHC-P (10 µg/ml)
Reactivity:	Human (Predicted: Monkey, Mouse, Rat, Hamster, Rabbit)
Host:	Rabbit
Clonality:	Polyclonal
Immunogen:	NET1 antibody was raised against synthetic 15 amino acid peptide from internal region of human NET1. Percent identity with other species by BLAST analysis: Human, Gorilla, Orangutan (100%); Gibbon, Marmoset, Mouse, Rat, Hamster, Elephant, Rabbit, Opossum, Platypus (93%); Panda, Dog, Horse, Turkey, Chicken (87%); Pig (80%).
Formulation:	PBS, 0.1% sodium azide.
Concentration:	lot specific
Purification:	Immunoaffinity purified
Conjugation:	Unconjugated
Storage:	Store at -20°C as received.
Stability:	Stable for 12 months from date of receipt.
Gene Name:	neuroepithelial cell transforming 1
Database Link:	NP_005854 Entrez Gene 56349 Mouse Entrez Gene 307098 Rat Entrez Gene 712080 Monkey Entrez Gene 10276 Human Q7Z628
Synonyms:	ARHGEF8; NET1A
Protein Families:	Druggable Genome



[View online »](#)

Product images:

Anti-NET1 antibody IHC of human placenta. Immunohistochemistry of formalin-fixed, paraffin-embedded tissue after heat-induced antigen retrieval.