

Product datasheet for **TA341072**

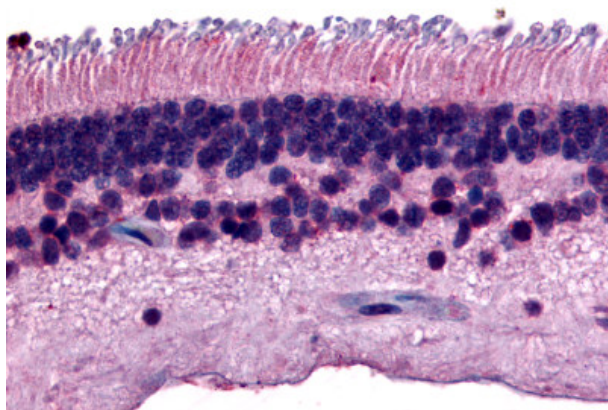
RPTP mu (PTPRM) Rabbit Polyclonal Antibody

Product data:

Product Type:	Primary Antibodies
Applications:	IHC
Recommended Dilution:	IHC-P (12 µg/ml)
Reactivity:	Human (Predicted: Chicken)
Host:	Rabbit
Clonality:	Polyclonal
Immunogen:	PTPRM / PTP Mu antibody was raised against synthetic 16 amino acid peptide from internal region of human PTPRM. Percent identity with other species by BLAST analysis: Human, Orangutan, Gibbon, Monkey, Marmoset, Mouse, Rat, Hamster, Bovine, Bat, Horse, Rabbit (100%); Opossum, Chicken (94%); Elephant, Panda, Dog (88%); Gorilla, Xenopus (81%).
Formulation:	PBS, 0.1% sodium azide.
Concentration:	lot specific
Purification:	Immunoaffinity purified
Conjugation:	Unconjugated
Storage:	Store at -20°C as received.
Stability:	Stable for 12 months from date of receipt.
Gene Name:	protein tyrosine phosphatase, receptor type M
Database Link:	NP_001098714 Entrez Gene 5797 Human P28827
Synonyms:	hR-PTPu; PTPRL1; R-PTP-MU; RPTPM; RPTPU
Protein Families:	Druggable Genome, Phosphatase, Transmembrane
Protein Pathways:	Adherens junction, Cell adhesion molecules (CAMs)



[View online »](#)

Product images:

Anti-PTPRM antibody IHC of human eye, retina. Immunohistochemistry of formalin-fixed, paraffin-embedded tissue after heat-induced antigen retrieval.