

## Product datasheet for **TA341071**

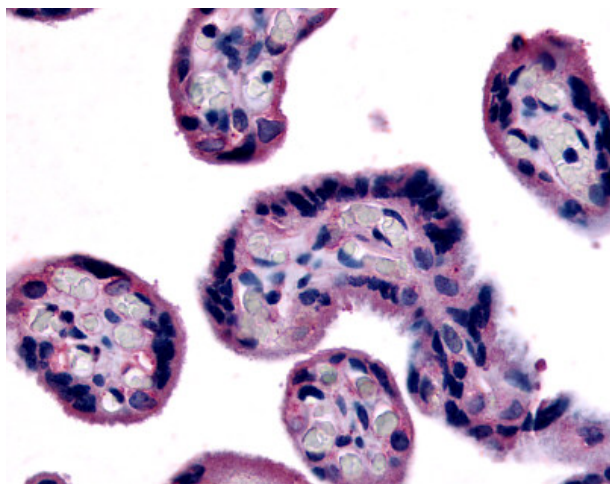
### SLC7A5 Rabbit Polyclonal Antibody

#### Product data:

Product Type:	Primary Antibodies
Applications:	IHC
Recommended Dilution:	IHC-P (15 µg/ml)
Reactivity:	Human (Predicted: Bat, Bovine, Horse)
Host:	Rabbit
Clonality:	Polyclonal
Immunogen:	SLC7A5 / CD98 antibody was raised against synthetic 15 amino acid peptide from internal region of human SLC7A5. Percent identity with other species by BLAST analysis: Gorilla, Monkey, Marmoset, Panda, Dog (100%); Human, Elephant, Bovine, Bat, Horse (93%); Rabbit (87%).
Formulation:	PBS, 0.1% sodium azide.
Concentration:	lot specific
Purification:	Immunoaffinity purified
Conjugation:	Unconjugated
Storage:	Store at -20°C as received.
Stability:	Stable for 12 months from date of receipt.
Gene Name:	solute carrier family 7 member 5
Database Link:	<a href="#">NP_003477</a> <a href="#">Entrez Gene 8140 Human</a> <a href="#">Q01650</a>
Synonyms:	4F2LC; CD98; D16S469E; E16; hLAT1; LAT1; MPE16
Protein Families:	Druggable Genome, Transmembrane



[View online »](#)

**Product images:**

Anti-SLC7A5 antibody IHC of human placenta. Immunohistochemistry of formalin-fixed, paraffin-embedded tissue after heat-induced antigen retrieval.