

Product datasheet for **TA341063**

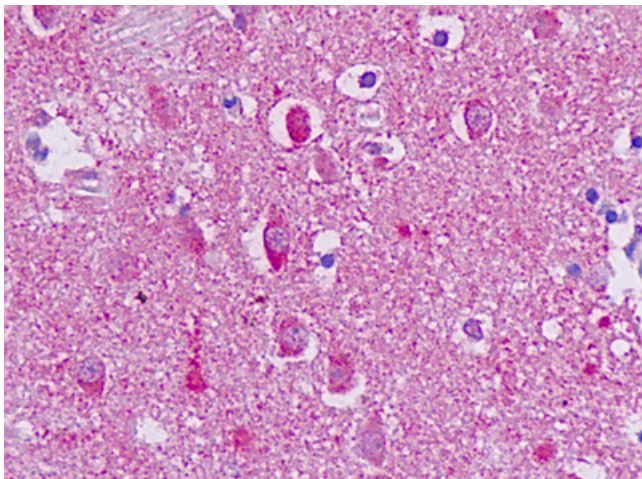
GPR56 (ADGRG1) Rabbit Polyclonal Antibody

Product data:

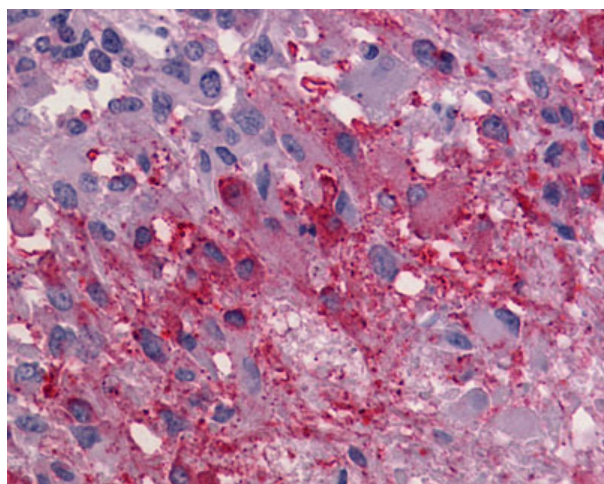
Product Type:	Primary Antibodies
Applications:	IHC
Recommended Dilution:	IHC-P (2.5 - 5 µg/ml)
Reactivity:	Human (Predicted: Pig)
Host:	Rabbit
Clonality:	Polyclonal
Immunogen:	GPR56 antibody was raised against synthetic 19 amino acid peptide from 1st cytoplasmic domain of human GPR56. Percent identity with other species by BLAST analysis: Human, Chimpanzee, Gorilla, Orangutan, Gibbon, Monkey, Marmoset (100%); Pig (95%); Bovine, Rabbit (89%).
Formulation:	PBS, 0.1% sodium azide.
Concentration:	lot specific
Purification:	Immunoaffinity purified
Conjugation:	Unconjugated
Storage:	Store at -20°C as received.
Stability:	Stable for 12 months from date of receipt.
Gene Name:	adhesion G protein-coupled receptor G1
Database Link:	NP_005673 Entrez Gene 9289 Human Q9Y653
Synonyms:	BFPP; BPPR; GPR56; TM7LN4; TM7XN1
Protein Families:	Druggable Genome, GPCR, Transmembrane



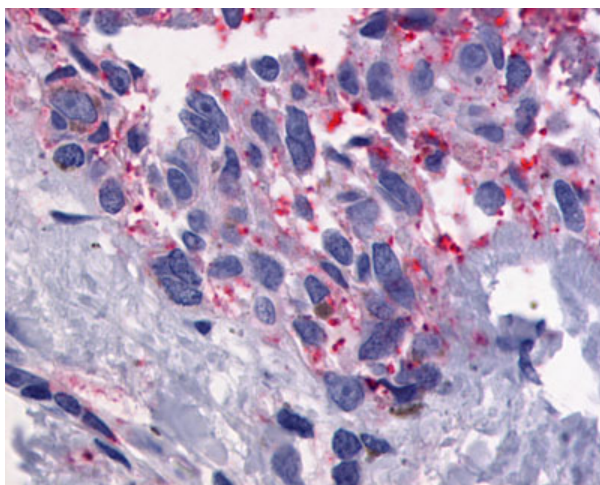
[View online »](#)

Product images:

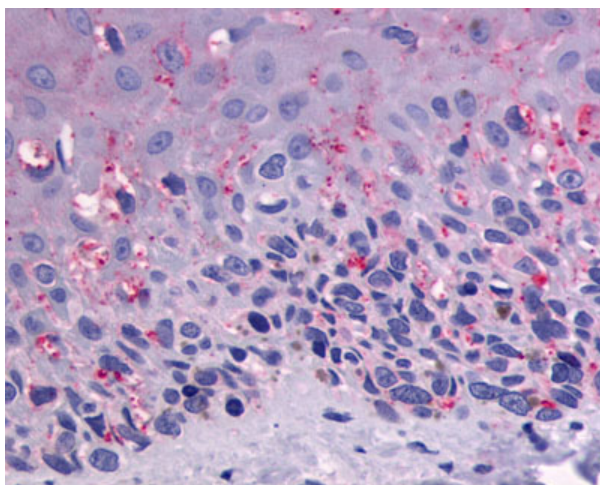
Human, Brain, neurons and glia: Formalin-Fixed Paraffin-Embedded (FFPE)



Anti-GPR56 antibody IHC of human Brain, Glioblastoma. Immunohistochemistry of formalin-fixed, paraffin-embedded tissue after heat-induced antigen retrieval.



Anti-GPR56 antibody IHC of human Skin, Melanoma. Immunohistochemistry of formalin-fixed, paraffin-embedded tissue after heat-induced antigen retrieval.



Anti-GPR56 antibody IHC of human Skin, Melanoma. Immunohistochemistry of formalin-fixed, paraffin-embedded tissue after heat-induced antigen retrieval.