

## Product datasheet for **TA341059**

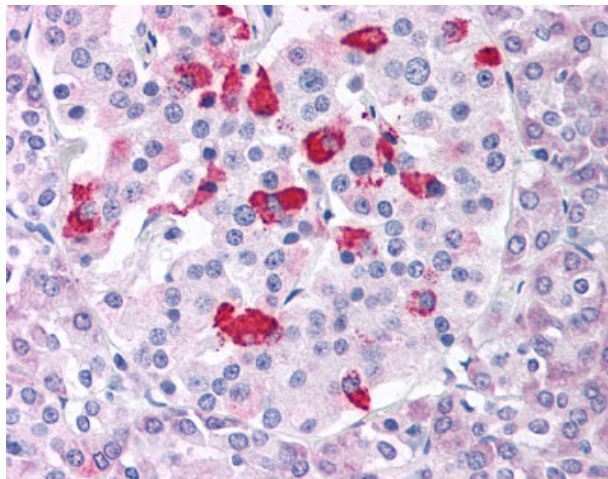
### **BACE1 Rabbit Polyclonal Antibody**

#### **Product data:**

<b>Product Type:</b>	Primary Antibodies
<b>Applications:</b>	IHC
<b>Recommended Dilution:</b>	IHC-P (2.5 µg/ml)
<b>Reactivity:</b>	Human
<b>Host:</b>	Rabbit
<b>Clonality:</b>	Polyclonal
<b>Immunogen:</b>	BACE1 / BACE antibody was raised against synthetic 15 amino acid peptide from internal region of human BACE1. Percent identity with other species by BLAST analysis: Human, Gibbon, Monkey, Marmoset, Mouse, Rat, Dog, Bat, Bovine, Hamster, Elephant, Panda, Horse, Rabbit, Pig, Opossum, Guinea pig (100%); Platypus (87%); Xenopus, Pufferfish, Zebrafish, Stickleback (80%).
<b>Formulation:</b>	PBS, 0.1% sodium azide.
<b>Concentration:</b>	lot specific
<b>Purification:</b>	Immunoaffinity purified
<b>Conjugation:</b>	Unconjugated
<b>Storage:</b>	Store at -20°C as received.
<b>Stability:</b>	Stable for 12 months from date of receipt.
<b>Gene Name:</b>	beta-secretase 1
<b>Database Link:</b>	<a href="#">NP_036236</a> <a href="#">Entrez Gene 23621 Human P56817</a>
<b>Synonyms:</b>	ASP2; BACE; HSPC104
<b>Protein Families:</b>	Druggable Genome, Protease, Transmembrane
<b>Protein Pathways:</b>	Alzheimer's disease



[View online »](#)

**Product images:**

Anti-BACE1 antibody IHC of human pancreas. Immunohistochemistry of formalin-fixed, paraffin-embedded tissue after heat-induced antigen retrieval.