

## Product datasheet for **TA341055**

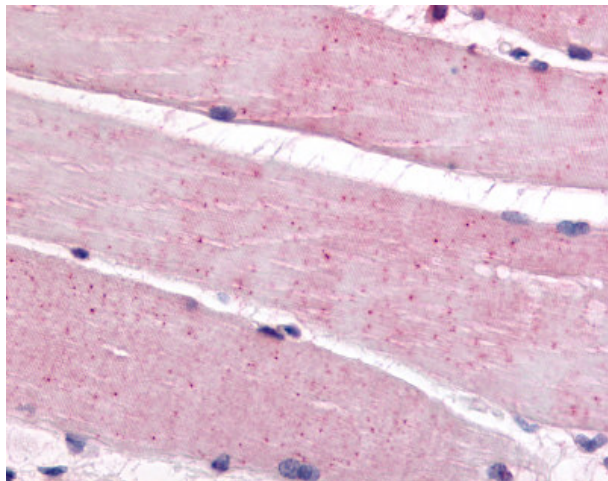
### Bestrophin 3 (BEST3) Rabbit Polyclonal Antibody

#### Product data:

Product Type:	Primary Antibodies
Applications:	IHC
Recommended Dilution:	IHC-P (5 - 7.5 µg/ml)
Reactivity:	Human
Host:	Rabbit
Clonality:	Polyclonal
Immunogen:	VMD2L3 / BEST3 antibody was raised against synthetic 18 amino acid peptide from near C-terminus of human BEST3. Percent identity with other species by BLAST analysis: Human, Gorilla, Gibbon (100%); Marmoset, Mouse, Rat, Hamster (89%); Monkey, Bat (83%).
Formulation:	PBS, 0.1% sodium azide.
Concentration:	lot specific
Purification:	Immunoaffinity purified
Conjugation:	Unconjugated
Storage:	Store at -20°C as received.
Stability:	Stable for 12 months from date of receipt.
Gene Name:	bestrophin 3
Database Link:	<a href="#">NP_689652</a> <a href="#">Entrez Gene 144453 Human</a> <a href="#">Q8N1M1</a>
Synonyms:	VMD2L3
Protein Families:	Ion Channels: Other, Transmembrane



[View online »](#)

**Product images:**

Anti-BEST3 antibody IHC of human skeletal muscle. Immunohistochemistry of formalin-fixed, paraffin-embedded tissue after heat-induced antigen retrieval.