

## Product datasheet for **TA341053**

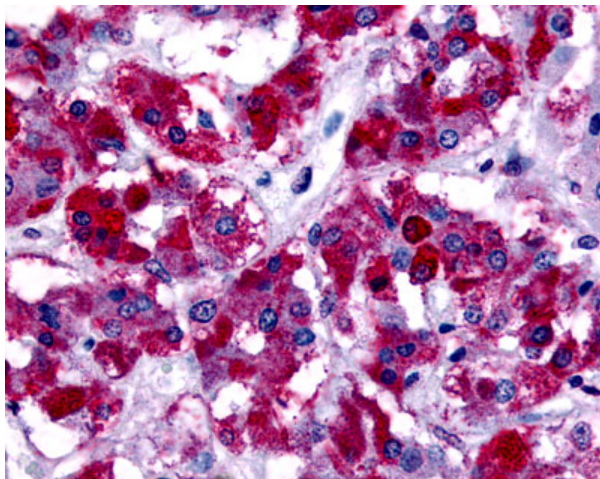
### G protein coupled receptor 30 (GPER1) Rabbit Polyclonal Antibody

#### Product data:

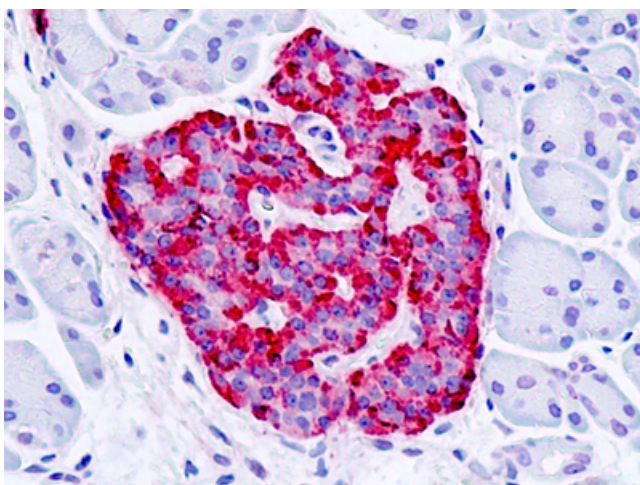
Product Type:	Primary Antibodies
Applications:	IHC
Recommended Dilution:	IHC-P (15 - 20 µg/ml)
Reactivity:	Human (Predicted: Monkey)
Host:	Rabbit
Clonality:	Polyclonal
Immunogen:	GPER1 / GPR30 antibody was raised against synthetic 16 amino acid peptide from 1st cytoplasmic domain of human GPR30. Percent identity with other species by BLAST analysis: Human, Gorilla (100%); Marmoset (94%); Monkey, Panda (88%).
Formulation:	PBS, 0.1% sodium azide.
Concentration:	lot specific
Purification:	Immunoaffinity purified
Conjugation:	Unconjugated
Storage:	Store at -20°C as received.
Stability:	Stable for 12 months from date of receipt.
Gene Name:	G protein-coupled estrogen receptor 1
Database Link:	<a href="#">NP_001026852</a> <a href="#">Entrez Gene 696625 Monkey</a> <a href="#">Entrez Gene 2852 Human</a> <a href="#">Q99527</a>
Synonyms:	CMKRL2; FEG-1; GPCR-Br; LERGU; LERGU2; MGC99678
Protein Families:	Druggable Genome, GPCR, Transmembrane



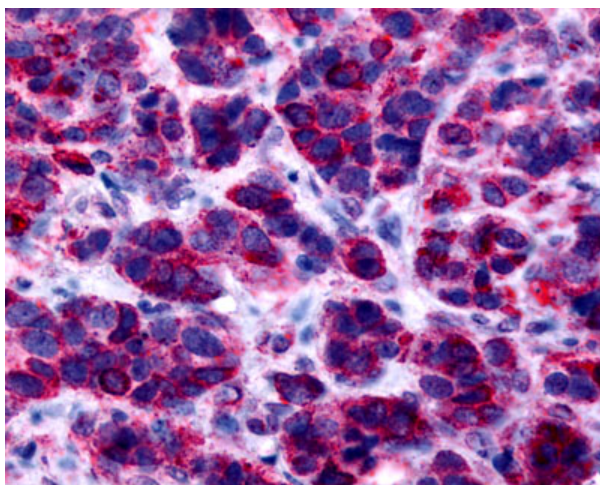
[View online »](#)

**Product images:**

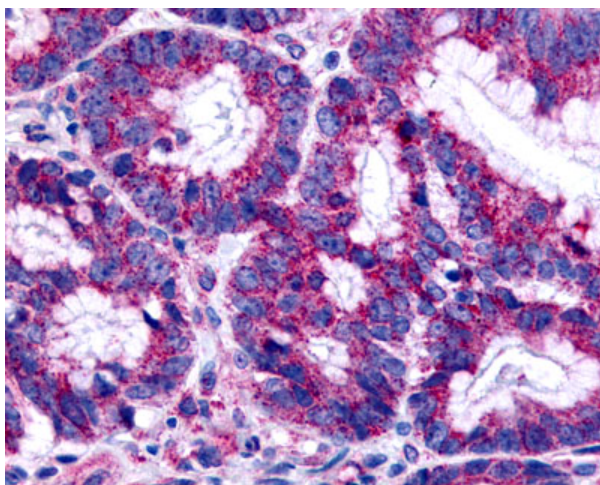
Anti-GPER1 / GPR30 antibody IHC of human adrenal. Immunohistochemistry of formalin-fixed, paraffin-embedded tissue after heat-induced antigen retrieval.



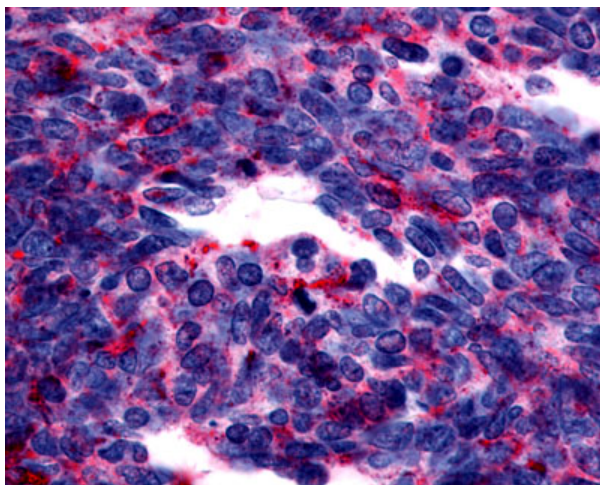
Human, Pancreas, Islet: Formalin-Fixed Paraffin-Embedded (FFPE)



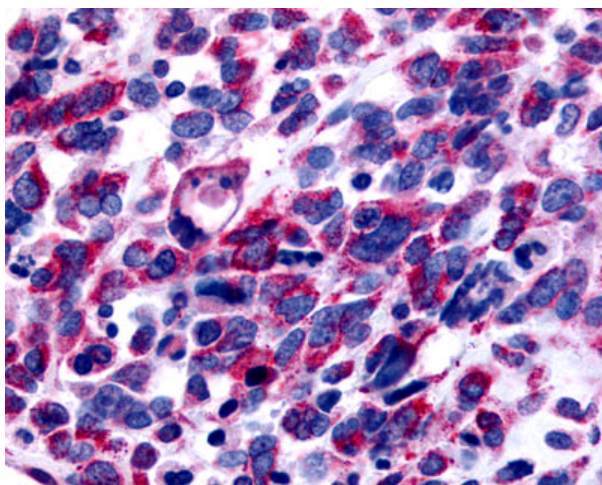
Anti-GPER1 / GPR30 antibody IHC of human breast, carcinoma. Immunohistochemistry of formalin-fixed, paraffin-embedded tissue after heat-induced antigen retrieval.



Anti-GPER1 / GPR30 antibody IHC of human colon, carcinoma. Immunohistochemistry of formalin-fixed, paraffin-embedded tissue after heat-induced antigen retrieval.



Anti-GPER1 / GPR30 antibody IHC of human Lung, Small Cell Carcinoma. Immunohistochemistry of formalin-fixed, paraffin-embedded tissue after heat-induced antigen retrieval.



Anti-GPER1 / GPR30 antibody IHC of human Skin, Melanoma. Immunohistochemistry of formalin-fixed, paraffin-embedded tissue after heat-induced antigen retrieval.