

## Product datasheet for **TA341052**

### RAI3 (GPC5A) Rabbit Polyclonal Antibody

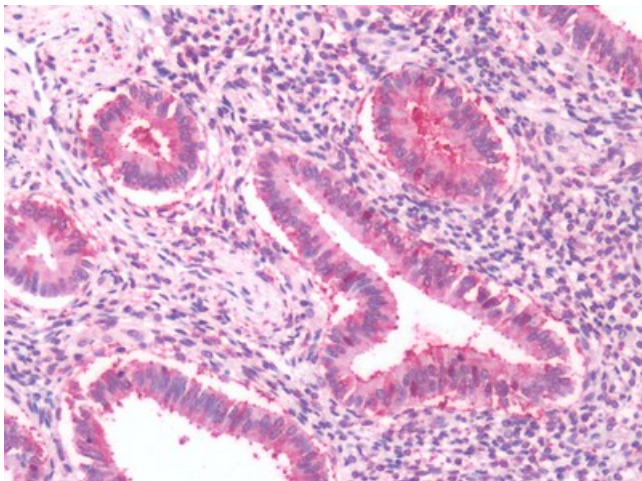
#### Product data:

Product Type:	Primary Antibodies
Applications:	IHC
Recommended Dilution:	IHC-P (5 - 6 µg/ml)
Reactivity:	Human (Predicted: Monkey, Bat, Dog)
Host:	Rabbit
Clonality:	Polyclonal
Immunogen:	GPC5A / RAI3 antibody was raised against synthetic 16 amino acid peptide from 1st cytoplasmic domain of human GPC5A / RAI3. Percent identity with other species by BLAST analysis: Human, Gorilla (100%); Gibbon, Monkey, Bat, Dog, Panda (94%); Marmoset, Bovine (88%); Hamster, Rabbit, Opossum (81%).
Formulation:	PBS, 0.1% sodium azide.
Concentration:	lot specific
Purification:	Immunoaffinity purified
Conjugation:	Unconjugated
Storage:	Store at -20°C as received.
Stability:	Stable for 12 months from date of receipt.
Gene Name:	G protein-coupled receptor class C group 5 member A
Database Link:	<a href="#">NP_003970</a> <a href="#">Entrez Gene 486680 Dog</a> <a href="#">Entrez Gene 697555 Monkey</a> <a href="#">Entrez Gene 9052 Human</a> <a href="#">Q8NFJ5</a>
Synonyms:	GPCR5A; PEIG-1; RAI3; RAIG1; TIG1
Protein Families:	Druggable Genome, GPCR, Transmembrane

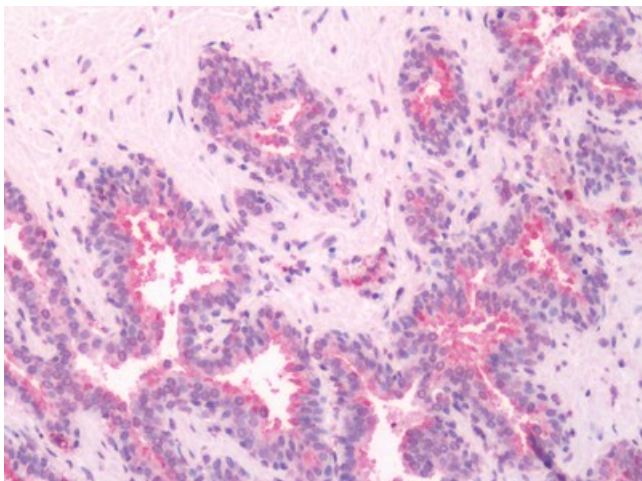


[View online »](#)

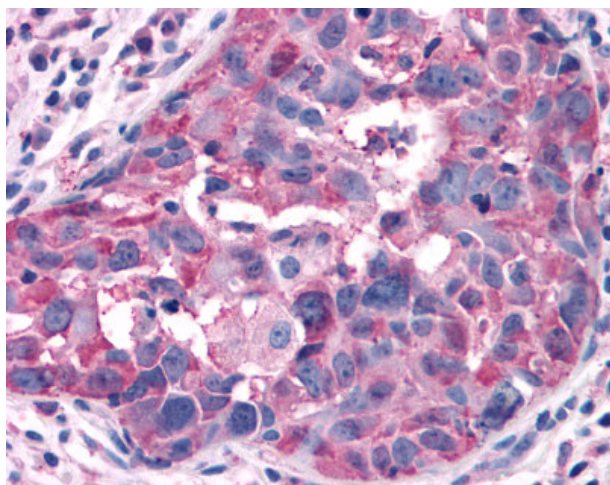
**Product images:**



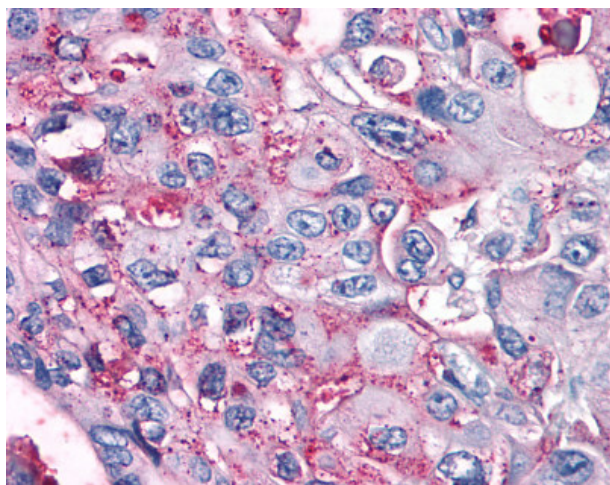
Human, Uterus: Formalin-Fixed Paraffin-Embedded (FFPE)



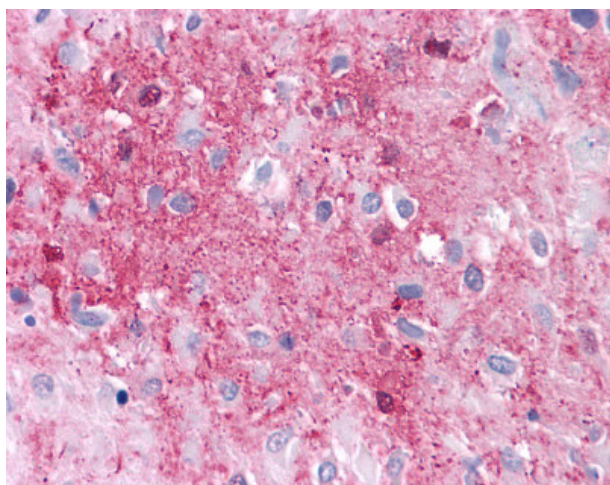
Human, Prostate: Formalin-Fixed Paraffin-Embedded (FFPE)



Anti-GPRC5A / RAI3 antibody IHC of human Breast, Carcinoma. Immunohistochemistry of formalin-fixed, paraffin-embedded tissue after heat-induced antigen retrieval.



Anti-GPRC5A / RAI3 antibody IHC of human Pancreas, Carcinoma. Immunohistochemistry of formalin-fixed, paraffin-embedded tissue after heat-induced antigen retrieval.



Anti-GPRC5A / RAI3 antibody IHC of human Brain, Glioblastoma. Immunohistochemistry of formalin-fixed, paraffin-embedded tissue after heat-induced antigen retrieval.