

## Product datasheet for **TA341050**

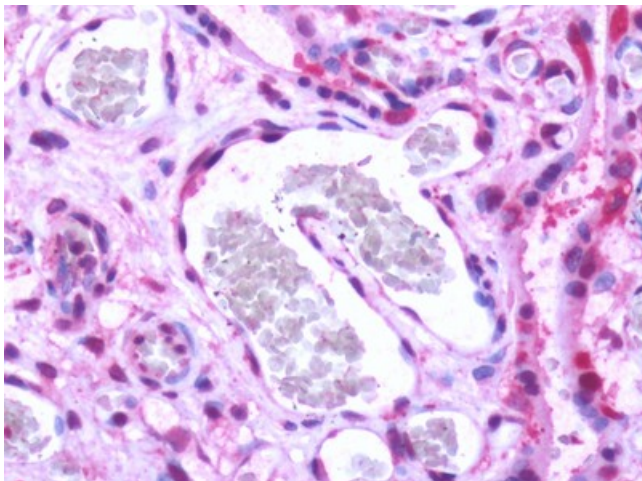
### EDG1 (S1PR1) Rabbit Polyclonal Antibody

#### Product data:

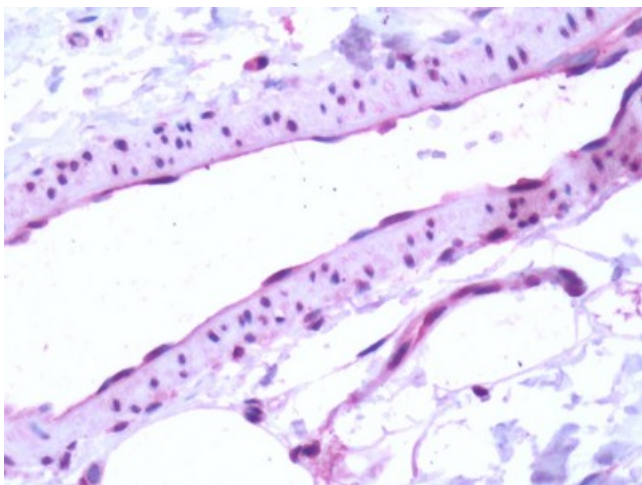
Product Type:	Primary Antibodies
Applications:	IHC
Recommended Dilution:	IHC-P (3 - 6 µg/ml)
Reactivity:	Human (Predicted: Monkey, Mouse, Rat, Bat, Bovine, Dog, Hamster, Horse, Xenopus)
Host:	Rabbit
Clonality:	Polyclonal
Immunogen:	S1PR1 / EDG1 / S1P1 antibody was raised against synthetic 16 amino acid peptide from 1st cytoplasmic domain of human S1PR1 / EDG1. Percent identity with other species by BLAST analysis: Human, Platypus (100%); Gorilla, Orangutan, Gibbon, Monkey, Marmoset, Mouse, Rat, Dog, Bat, Bovine, Hamster, Panda, Horse, Opossum, Turkey, Lizard, Xenopus (94%); Shrew, Cat, Elephant, Pig (88%); Zebrafish (81%).
Formulation:	PBS, 0.1% sodium azide.
Concentration:	lot specific
Purification:	Immunoaffinity purified
Conjugation:	Unconjugated
Storage:	Store at -20°C as received.
Stability:	Stable for 12 months from date of receipt.
Gene Name:	sphingosine-1-phosphate receptor 1
Database Link:	<a href="#">NP_001391</a> <a href="#">Entrez Gene 13609 Mouse</a> <a href="#">Entrez Gene 29733 Rat</a> <a href="#">Entrez Gene 490138 Dog</a> <a href="#">Entrez Gene 716813 Monkey</a> <a href="#">Entrez Gene 1901 Human</a> <a href="#">P21453</a>
Synonyms:	CD363; CHEDG1; D1S3362; ECGF1; EDG-1; EDG1; S1P1
Protein Families:	Druggable Genome, GPCR, Transmembrane
Protein Pathways:	Neuroactive ligand-receptor interaction



[View online »](#)

**Product images:**

Human, Placenta: Formalin-Fixed Paraffin-Embedded (FFPE)



Human, Vascular Endothelium: Formalin-Fixed Paraffin-Embedded (FFPE)