

Product datasheet for **TA341049**

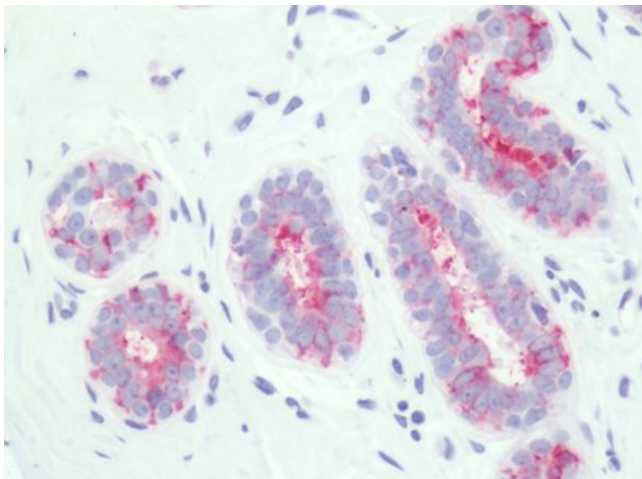
PTGER3 Rabbit Polyclonal Antibody

Product data:

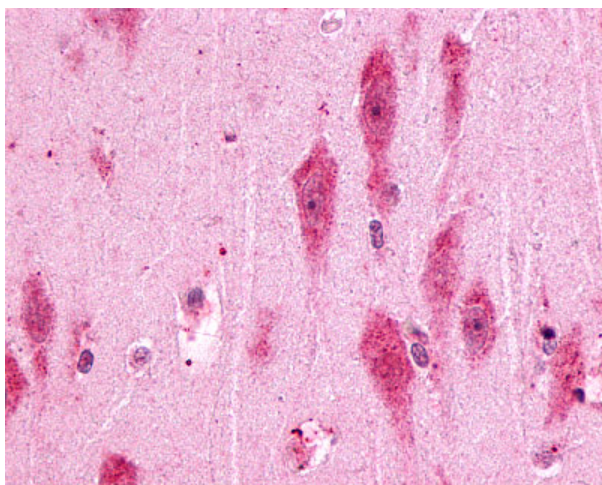
Product Type:	Primary Antibodies
Applications:	IHC
Recommended Dilution:	IHC-P (1 - 3 µg/ml)
Reactivity:	Human (Predicted: Mouse)
Host:	Rabbit
Clonality:	Polyclonal
Immunogen:	PTGER3 / EP3 antibody was raised against synthetic 17 amino acid peptide from 1st cytoplasmic domain of human PTGER3 / EP3. Percent identity with other species by BLAST analysis: Human, Gorilla, Gibbon, Monkey, Panda, Bat (100%); Mouse (94%); Xenopus (88%); Bovine, Pig, Opossum (82%).
Formulation:	PBS, 0.1% sodium azide.
Concentration:	lot specific
Purification:	Immunoaffinity purified
Conjugation:	Unconjugated
Storage:	Store at -20°C as received.
Stability:	Stable for 12 months from date of receipt.
Gene Name:	prostaglandin E receptor 3
Database Link:	NP_942009 Entrez Gene 19218 Mouse Entrez Gene 5733 Human P43115
Synonyms:	EP3; EP3-I; EP3-II; EP3-III; EP3-IV; EP3e; PGE2-R
Protein Families:	Druggable Genome, GPCR, Transcription Factors, Transmembrane
Protein Pathways:	Calcium signaling pathway, Neuroactive ligand-receptor interaction



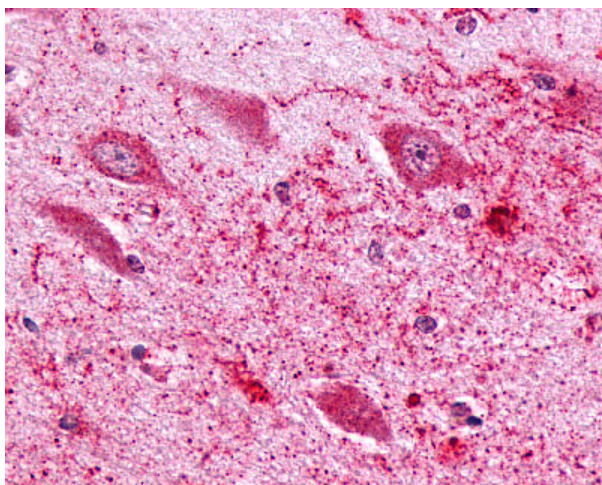
[View online »](#)

Product images:

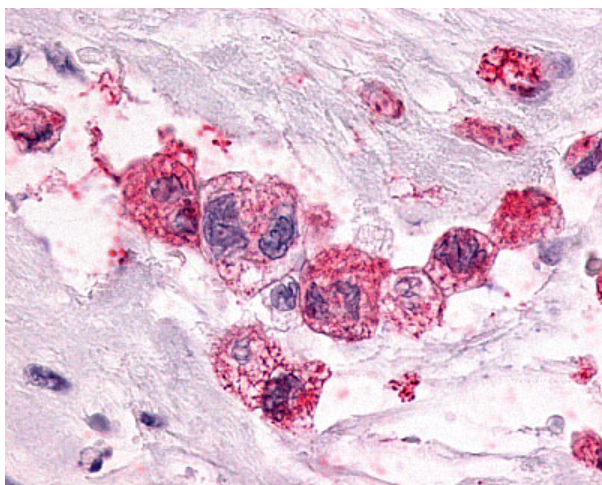
Human, Breast: Formalin-Fixed Paraffin-Embedded (FFPE)



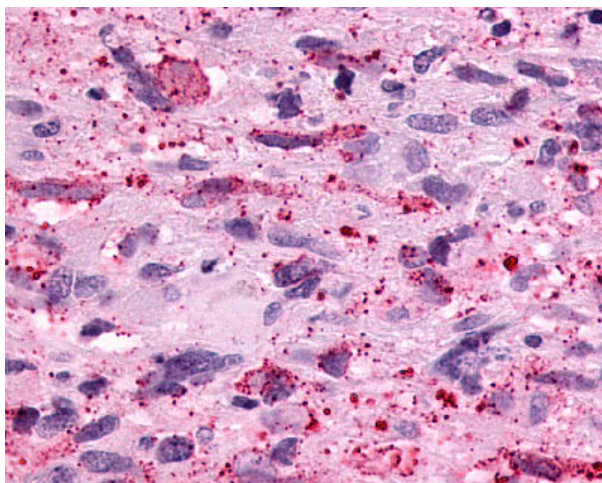
Anti-PTGER3 / EP3 antibody IHC of human brain, hippocampus. Immunohistochemistry of formalin-fixed, paraffin-embedded tissue after heat-induced antigen retrieval.



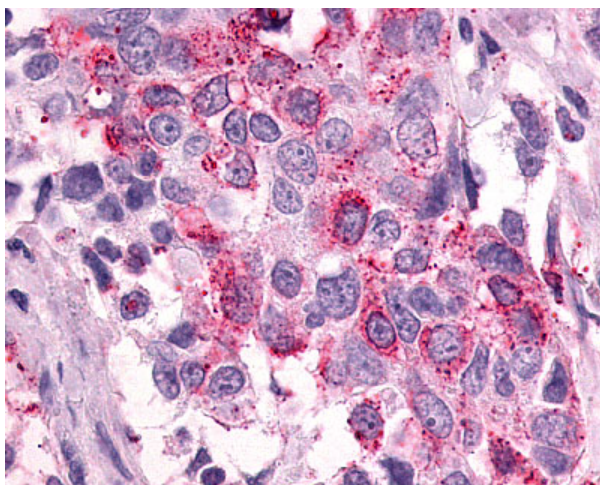
Anti-PTGER3 / EP3 antibody IHC of human brain, hippocampus. Immunohistochemistry of formalin-fixed, paraffin-embedded tissue after heat-induced antigen retrieval.



Anti-PTGER3 / EP3 antibody IHC of human Pancreas, Carcinoma. Immunohistochemistry of formalin-fixed, paraffin-embedded tissue after heat-induced antigen retrieval.



Anti-PTGER3 / EP3 antibody IHC of human brain, glioblastoma. Immunohistochemistry of formalin-fixed, paraffin-embedded tissue after heat-induced antigen retrieval.



Anti-PTGER3 / EP3 antibody IHC of human Breast, Carcinoma. Immunohistochemistry of formalin-fixed, paraffin-embedded tissue after heat-induced antigen retrieval.