

Product datasheet for **TA341045**

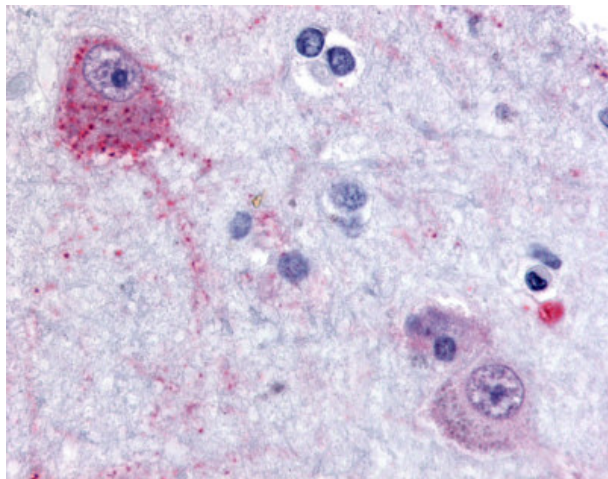
PACE4 (PCSK6) Rabbit Polyclonal Antibody

Product data:

Product Type:	Primary Antibodies
Applications:	IHC
Recommended Dilution:	IHC-P (10 - 15 µg/ml)
Reactivity:	Human (Predicted: Monkey)
Host:	Rabbit
Clonality:	Polyclonal
Immunogen:	PACE4 / PCSK6 antibody was raised against synthetic 16 amino acid peptide from internal region of human PACE4. Percent identity with other species by BLAST analysis: Human, Gorilla, Gibbon, Monkey, Rabbit (100%); Marmoset (94%); Mouse, Rat, Elephant, Panda, Bovine, Dog, Horse, Pig, Opossum (88%); Bat (81%).
Formulation:	PBS, 0.1% sodium azide.
Concentration:	lot specific
Purification:	Immunoaffinity purified
Conjugation:	Unconjugated
Storage:	Store at -20°C as received.
Stability:	Stable for 12 months from date of receipt.
Gene Name:	proprotein convertase subtilisin/kexin type 6
Database Link:	NP_612193 Entrez Gene 5046 Human P29122
Synonyms:	PACE4; SPC4
Protein Families:	Druggable Genome, Protease, Secreted Protein



[View online »](#)

Product images:

Anti-PACE4 antibody IHC of human brain, cortex. Immunohistochemistry of formalin-fixed, paraffin-embedded tissue after heat-induced antigen retrieval.