

Product datasheet for **TA341040**

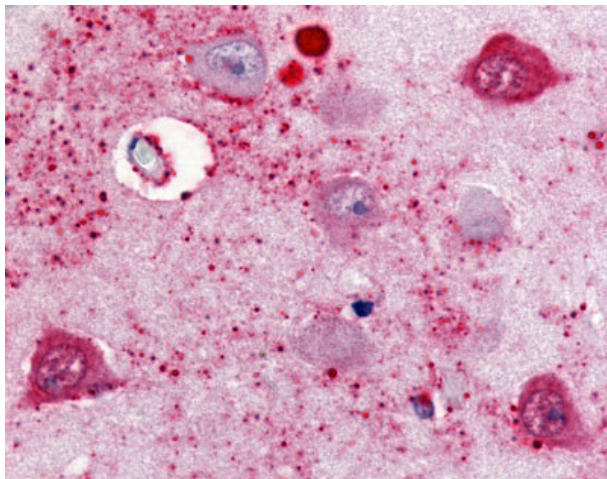
Somatostatin Receptor 2 (SSTR2) Rabbit Polyclonal Antibody

Product data:

Product Type:	Primary Antibodies
Applications:	IHC
Recommended Dilution:	IHC-P (10 µg/ml)
Reactivity:	Human (Predicted: Xenopus)
Host:	Rabbit
Clonality:	Polyclonal
Immunogen:	SSTR2 antibody was raised against synthetic 18 amino acid peptide from 3rd cytoplasmic domain of human SSTR2. Percent identity with other species by BLAST analysis: Human, Gibbon, Monkey, Marmoset, Mouse, Rat, Hamster, Elephant, Panda, Bat, Bovine, Dog, Horse, Rabbit, Pig, Opossum, Guinea pig, Chicken (100%); Platypus, Lizard, Xenopus, Stickleback, Pufferfish (94%); Zebrafish (83%).
Formulation:	PBS, 0.1% sodium azide.
Concentration:	lot specific
Purification:	Immunoaffinity purified
Conjugation:	Unconjugated
Storage:	Store at -20°C as received.
Stability:	Stable for 12 months from date of receipt.
Gene Name:	somatostatin receptor 2
Database Link:	NP_001041 Entrez Gene 6752 Human P30874
Synonyms:	SRIF-1; SS2R
Protein Families:	Druggable Genome, GPCR, Transmembrane
Protein Pathways:	Neuroactive ligand-receptor interaction



[View online »](#)

Product images:

Anti-SSTR2 antibody IHC of human brain, subiculum neurons. Immunohistochemistry of formalin-fixed, paraffin-embedded tissue after heat-induced antigen retrieval.