

Product datasheet for **TA341037**

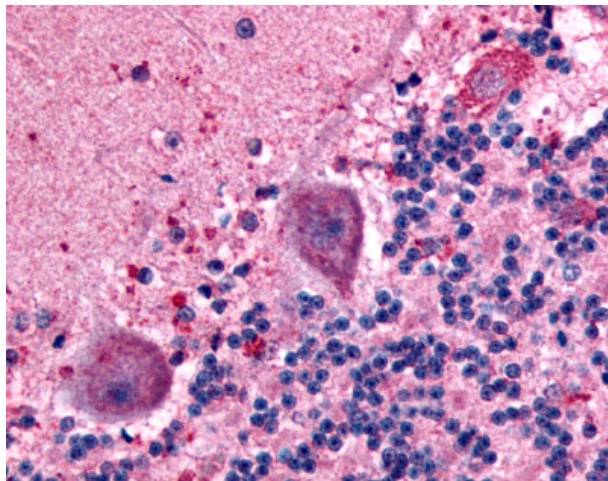
BAI1 (ADGRB1) Rabbit Polyclonal Antibody

Product data:

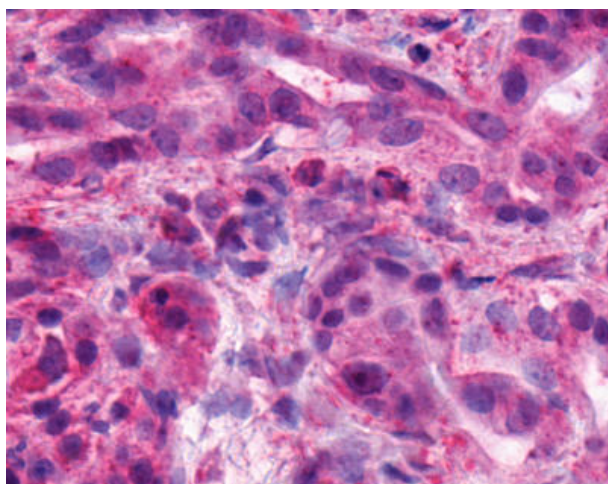
Product Type:	Primary Antibodies
Applications:	IHC
Recommended Dilution:	IHC-P (15 µg/ml)
Reactivity:	Human
Host:	Rabbit
Clonality:	Polyclonal
Immunogen:	BAI1 antibody was raised against synthetic 16 amino acid peptide from C-terminus of human BAI1. Percent identity with other species by BLAST analysis: Human, Gorilla, Gibbon, Monkey (100%); Mouse, Rat, Hamster, Bovine (88%).
Formulation:	PBS, 0.1% sodium azide.
Concentration:	lot specific
Purification:	Immunoaffinity purified
Conjugation:	Unconjugated
Storage:	Store at -20°C as received.
Stability:	Stable for 12 months from date of receipt.
Gene Name:	adhesion G protein-coupled receptor B1
Database Link:	NP_001693 Entrez Gene 575 Human O14514
Synonyms:	BAI1; GDAIF
Protein Families:	Druggable Genome, Transmembrane
Protein Pathways:	p53 signaling pathway



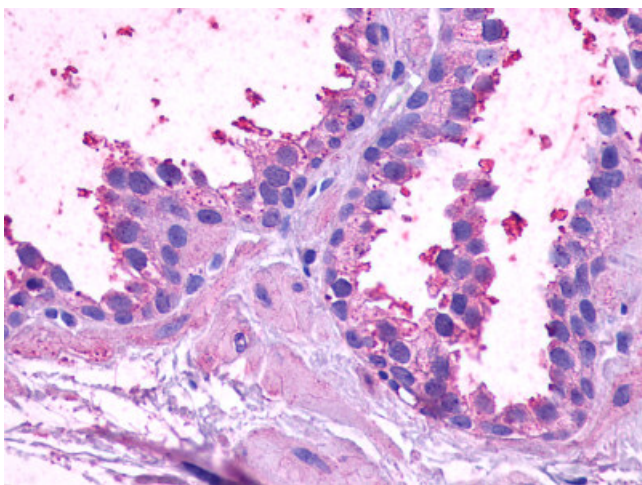
[View online »](#)

Product images:

Anti-BAI1 antibody IHC of human brain, neurons. Immunohistochemistry of formalin-fixed, paraffin-embedded tissue after heat-induced antigen retrieval.



Anti-BAI1 antibody IHC of human Pancreas, Carcinoma. Immunohistochemistry of formalin-fixed, paraffin-embedded tissue after heat-induced antigen retrieval.



Anti-BAI1 antibody IHC of human prostate, benign prostatic hyperplasia. Immunohistochemistry of formalin-fixed, paraffin-embedded tissue after heat-induced antigen retrieval.