

Product datasheet for **TA341032**

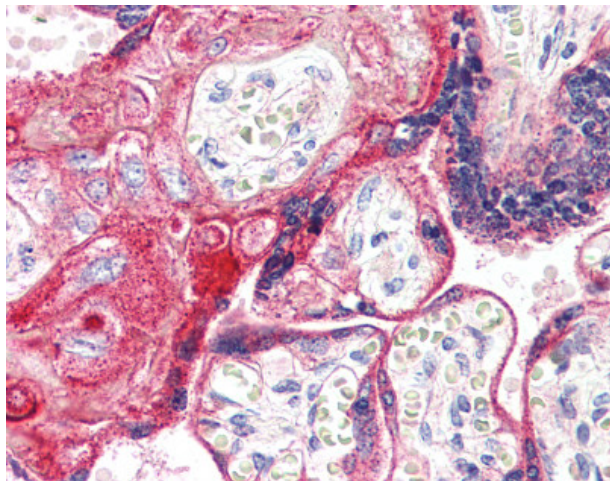
EP2 (PTGER2) Rabbit Polyclonal Antibody

Product data:

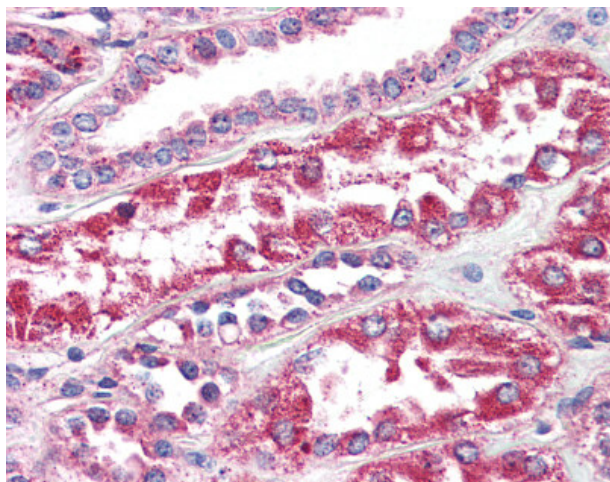
Product Type:	Primary Antibodies
Applications:	IHC
Recommended Dilution:	IHC-P (10 µg/ml)
Reactivity:	Human (Predicted: Monkey, Mouse, Rat, Hamster)
Host:	Rabbit
Clonality:	Polyclonal
Immunogen:	PTGER2 / EP2 antibody was raised against synthetic 16 amino acid peptide from internal region of human EP2. Percent identity with other species by BLAST analysis: Human, Gorilla (100%); Monkey, Marmoset, Mouse, Rat, Hamster (94%); Bat, Dog, Pig (88%); Gibbon, Panda, Horse (81%).
Formulation:	PBS, 0.1% sodium azide.
Concentration:	lot specific
Purification:	Immunoaffinity purified
Conjugation:	Unconjugated
Storage:	Store at -20°C as received.
Stability:	Stable for 12 months from date of receipt.
Gene Name:	prostaglandin E receptor 2
Database Link:	NP_000947 Entrez Gene 19217 Mouse Entrez Gene 81752 Rat Entrez Gene 708024 Monkey Entrez Gene 5732 Human P43116
Synonyms:	EP2
Protein Families:	Druggable Genome, GPCR, Transmembrane
Protein Pathways:	Neuroactive ligand-receptor interaction



[View online »](#)

Product images:

Anti-EP2 antibody IHC of human placenta. Immunohistochemistry of formalin-fixed, paraffin-embedded tissue after heat-induced antigen retrieval.



Anti-EP2 antibody IHC of human kidney. Immunohistochemistry of formalin-fixed, paraffin-embedded tissue after heat-induced antigen retrieval.