

Product datasheet for **TA341026**

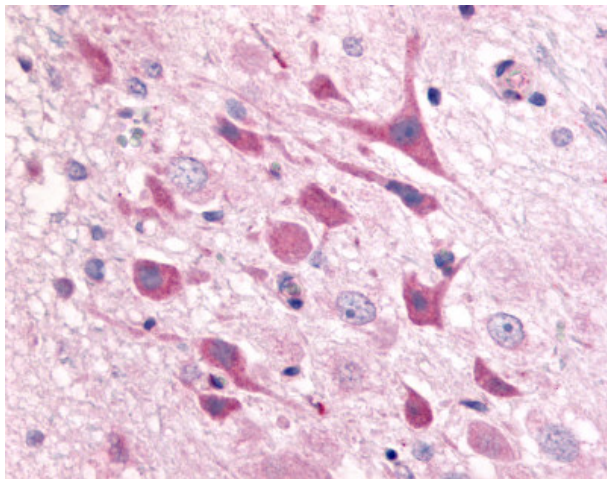
Adenosine A1 Receptor (ADORA1) Rabbit Polyclonal Antibody

Product data:

Product Type:	Primary Antibodies
Applications:	IHC
Recommended Dilution:	IHC-P (16 µg/ml)
Reactivity:	Human (Predicted: Monkey, Mouse, Bat, Dog, Hamster, Horse, Pig, Rabbit, Guinea Pig)
Host:	Rabbit
Clonality:	Polyclonal
Immunogen:	ADORA1 / Adenosine A1 Receptor antibody was raised against synthetic 20 amino acid peptide from 2nd extracellular domain of human Adenosine A1 Receptor. Percent identity with other species by BLAST analysis: Human, Orangutan, Monkey (100%); Gibbon, Marmoset, Mouse, Rat, Hamster, Elephant, Dog, Bat, Horse, Rabbit, Guinea pig (95%); Panda, Pig (90%); Bovine (85%).
Formulation:	PBS, 0.1% sodium azide.
Concentration:	lot specific
Purification:	Immunoaffinity purified
Conjugation:	Unconjugated
Storage:	Store at -20°C as received.
Stability:	Stable for 12 months from date of receipt.
Gene Name:	adenosine A1 receptor
Database Link:	NP_001041695 Entrez Gene 11539 Mouse Entrez Gene 403961 Dog Entrez Gene 703638 Monkey Entrez Gene 134 Human P30542
Synonyms:	RDC7
Protein Families:	Druggable Genome, GPCR, Transmembrane
Protein Pathways:	Neuroactive ligand-receptor interaction



[View online »](#)

Product images:

Anti-Adenosine A1 Receptor antibody IHC of rat brain, neurons. Immunohistochemistry of formalin-fixed, paraffin-embedded tissue after heat-induced antigen retrieval.