

Product datasheet for **TA341024**

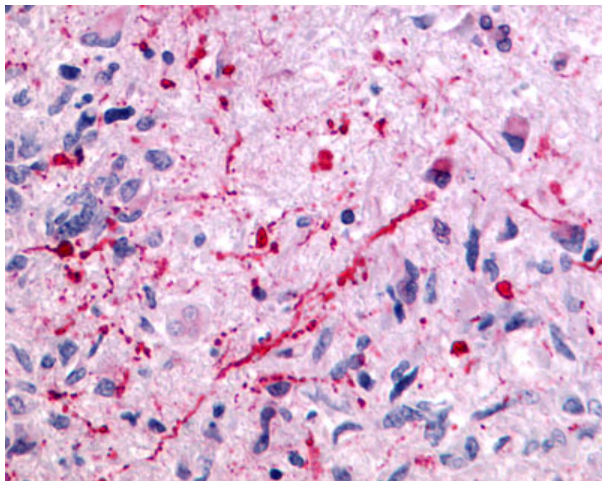
Metabotropic Glutamate Receptor 5 (GRM5) Rabbit Polyclonal Antibody

Product data:

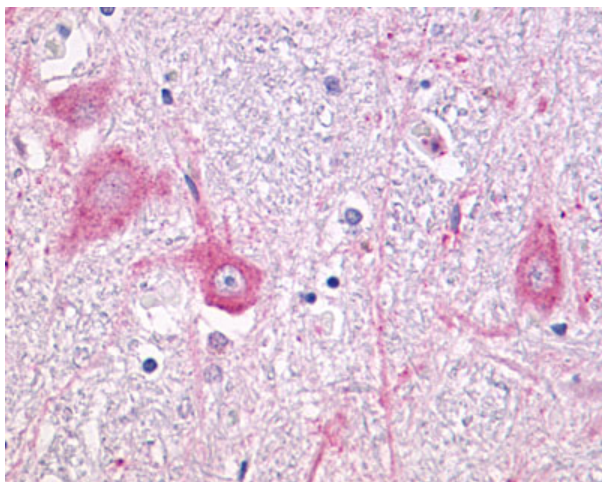
Product Type:	Primary Antibodies
Applications:	IHC
Recommended Dilution:	IHC-P (4 - 13 µg/ml), WB
Reactivity:	Human (Predicted: Chicken)
Host:	Rabbit
Clonality:	Polyclonal
Immunogen:	GRM5 / MGLUR5 antibody was raised against synthetic 20 amino acid peptide from C-terminus of human GRM5 / MGLUR5. Percent identity with other species by BLAST analysis: Human, Gibbon, Monkey, Marmoset, Mouse, Rat, Dog, Bat, Bovine, Horse (100%); Platypus (95%); Opossum, Turkey, Chicken, Lizard (90%).
Formulation:	PBS, 0.1% sodium azide.
Concentration:	lot specific
Purification:	Immunoaffinity purified
Conjugation:	Unconjugated
Storage:	Store at -20°C as received.
Stability:	Stable for 12 months from date of receipt.
Gene Name:	glutamate metabotropic receptor 5
Database Link:	NP_001137303 Entrez Gene 2915 Human P41594
Synonyms:	GPRC1E; mGlu5; MGLUR5; PPP1R86
Protein Families:	Druggable Genome, GPCR, Transmembrane
Protein Pathways:	Calcium signaling pathway, Gap junction, Huntington's disease, Long-term depression, Long-term potentiation, Neuroactive ligand-receptor interaction



[View online »](#)

Product images:

Anti-GRM5 / MGLUR5 antibody IHC of human Brain, Glioblastoma. Immunohistochemistry of formalin-fixed, paraffin-embedded tissue after heat-induced antigen retrieval.



Anti-GRM5 / MGLUR5 antibody IHC of human brain, neurons and glia. Immunohistochemistry of formalin-fixed, paraffin-embedded tissue after heat-induced antigen retrieval.