

## Product datasheet for **TA341023**

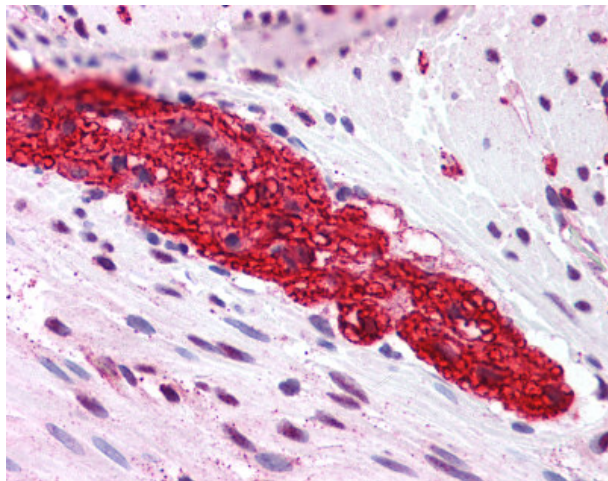
### Metabotropic Glutamate Receptor 5 (GRM5) Rabbit Polyclonal Antibody

#### Product data:

Product Type:	Primary Antibodies
Applications:	IHC
Recommended Dilution:	IHC-P (5.6 µg/ml)
Reactivity:	Human (Predicted: Xenopus)
Host:	Rabbit
Clonality:	Polyclonal
Immunogen:	GRM5 / MGLUR5 antibody was raised against synthetic 17 amino acid peptide from N-terminal extracellular domain of human GRM5 / MGLUR5. Percent identity with other species by BLAST analysis: Human, Gibbon, Monkey, Marmoset, Mouse, Rat, Dog, Bat, Bovine, Hamster, Horse, Rabbit, Pig, Turkey, Zebra finch, Chicken, Platypus, Lizard (100%); Xenopus (94%); Opossum, Pufferfish (88%); Zebrafish (82%).
Formulation:	PBS, 0.1% sodium azide.
Concentration:	lot specific
Purification:	Immunoaffinity purified
Conjugation:	Unconjugated
Storage:	Store at -20°C as received.
Stability:	Stable for 12 months from date of receipt.
Gene Name:	glutamate metabotropic receptor 5
Database Link:	<a href="#">NP_001137303</a> <a href="#">Entrez Gene 2915 Human P41594</a>
Synonyms:	GPRC1E; mGlu5; MGLUR5; PPP1R86
Protein Families:	Druggable Genome, GPCR, Transmembrane
Protein Pathways:	Calcium signaling pathway, Gap junction, Huntington's disease, Long-term depression, Long-term potentiation, Neuroactive ligand-receptor interaction



[View online »](#)

**Product images:**

Anti-GRM5 / MGLUR5 antibody IHC of human colon, myenteric plexus. Immunohistochemistry of formalin-fixed, paraffin-embedded tissue after heat-induced antigen retrieval.