

## Product datasheet for **TA341022**

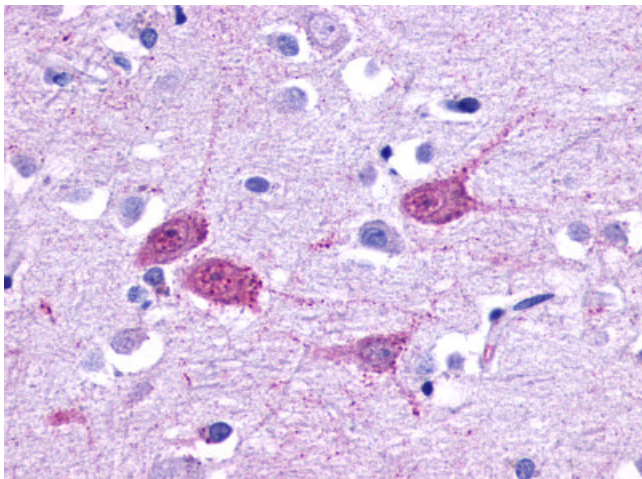
### 5 HT1F (HTR1F) Rabbit Polyclonal Antibody

#### Product data:

Product Type:	Primary Antibodies
Applications:	IHC
Recommended Dilution:	IHC-P (6.5 µg/ml)
Reactivity:	Human (Predicted: Monkey, Bovine, Horse, Rabbit, Guinea Pig)
Host:	Rabbit
Clonality:	Polyclonal
Immunogen:	HTR1F / 5-HT1F Receptor antibody was raised against synthetic 16 amino acid peptide from 3rd cytoplasmic domain of human 5HT1F Receptor. Percent identity with other species by BLAST analysis: Human, Chimpanzee, Orangutan, Gibbon (100%); Gorilla, Monkey, Bovine, Elephant, Horse, Rabbit, Guinea pig, Platypus (94%); Dog, Bat (88%); Rat, Panda (81%).
Formulation:	PBS, 0.1% sodium azide.
Concentration:	lot specific
Purification:	Immunoaffinity purified
Conjugation:	Unconjugated
Storage:	Store at -20°C as received.
Stability:	Stable for 12 months from date of receipt.
Gene Name:	5-hydroxytryptamine receptor 1F
Database Link:	<a href="#">NP_000857</a> <a href="#">Entrez Gene 693418 Monkey</a> <a href="#">Entrez Gene 3355 Human</a> <a href="#">P30939</a>
Synonyms:	5-HT-1F; 5-HT1F; 5HT6; HTR1EL; MR77
Protein Families:	Druggable Genome, GPCR, Transmembrane
Protein Pathways:	Neuroactive ligand-receptor interaction



[View online »](#)

**Product images:**

Anti-5HT1F Receptor antibody IHC of human brain, cortex. Immunohistochemistry of formalin-fixed, paraffin-embedded tissue after heat-induced antigen retrieval.