

Product datasheet for **TA341021**

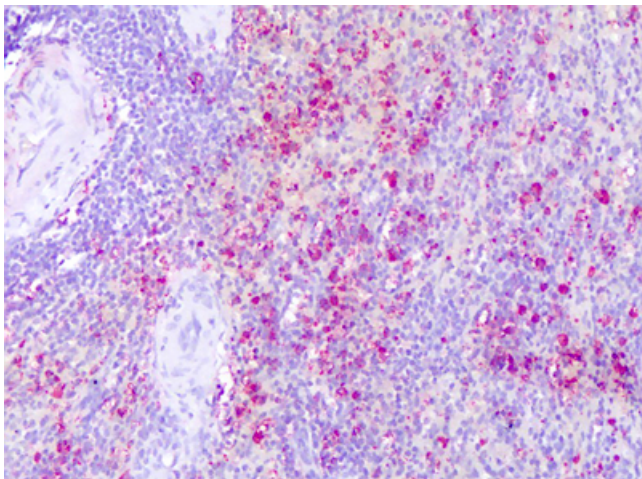
CX3CR1 Rabbit Polyclonal Antibody

Product data:

Product Type:	Primary Antibodies
Applications:	IHC
Recommended Dilution:	IHC-P (5 - 10 µg/ml)
Reactivity:	Human (Predicted: Monkey)
Host:	Rabbit
Clonality:	Polyclonal
Immunogen:	CX3CR1 antibody was raised against synthetic 19 amino acid peptide from 3rd extracellular domain of human CX3CR1. Percent identity with other species by BLAST analysis: Human (100%); Gorilla, Gibbon, Monkey (95%); Marmoset, Mouse, Panda (84%).
Formulation:	PBS, 0.1% sodium azide.
Concentration:	lot specific
Purification:	Immunoaffinity purified
Conjugation:	Unconjugated
Storage:	Store at -20°C as received.
Stability:	Stable for 12 months from date of receipt.
Gene Name:	C-X3-C motif chemokine receptor 1
Database Link:	NP_001328 Entrez Gene 693926 Monkey Entrez Gene 1524 Human P49238
Synonyms:	CCRL1; CMKBRL1; CMKDR1; GPR13; GPRV28; V28
Protein Families:	Druggable Genome, GPCR, Transmembrane
Protein Pathways:	Chemokine signaling pathway, Cytokine-cytokine receptor interaction



[View online »](#)

Product images:

Anti-CX3CR1 antibody IHC of human spleen. Immunohistochemistry of formalin-fixed, paraffin-embedded tissue after heat-induced antigen retrieval.