

Product datasheet for **TA341020**

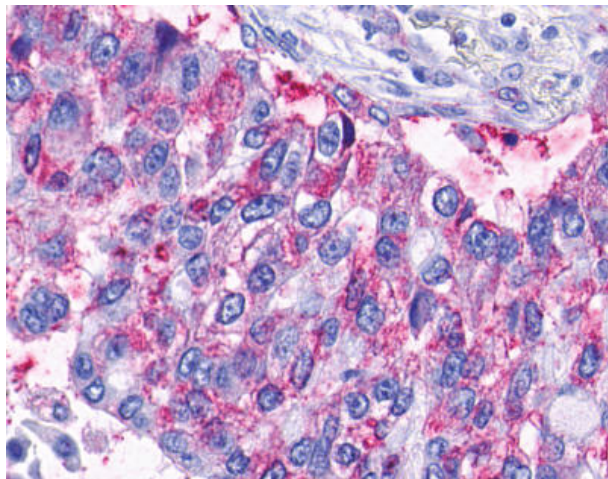
P2RY5 (LPAR6) Rabbit Polyclonal Antibody

Product data:

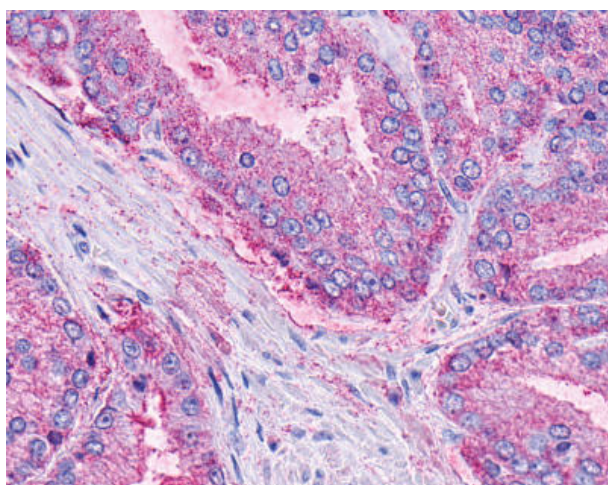
Product Type:	Primary Antibodies
Applications:	IHC
Recommended Dilution:	IHC-P (2.5 µg/ml)
Reactivity:	Human (Predicted: Monkey)
Host:	Rabbit
Clonality:	Polyclonal
Immunogen:	LPAR6 / P2RY5 / P2Y5 antibody was raised against synthetic 16 amino acid peptide from 2nd extracellular domain of human LPAR6 / P2RY5. Percent identity with other species by BLAST analysis: Human, Gorilla, Gibbon (100%); Monkey (94%); Mouse, Rat, Hamster, Rabbit (88%); Bat (81%).
Formulation:	PBS, 0.1% sodium azide.
Concentration:	lot specific
Purification:	Immunoaffinity purified
Conjugation:	Unconjugated
Storage:	Store at -20°C as received.
Stability:	Stable for 12 months from date of receipt.
Gene Name:	lysophosphatidic acid receptor 6
Database Link:	NP_001155969 Entrez Gene 705081 Monkey Entrez Gene 10161 Human P43657
Synonyms:	ARWH1; HYPT8; LAH3; P2RY5; P2Y5
Protein Families:	Druggable Genome, GPCR, Transmembrane
Protein Pathways:	Neuroactive ligand-receptor interaction



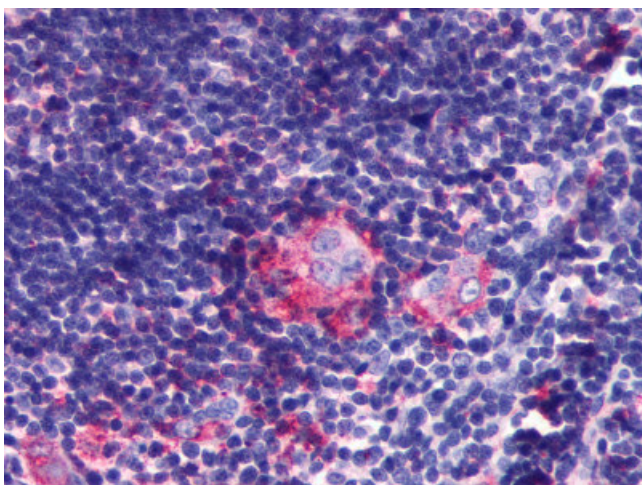
[View online »](#)

Product images:

Anti-LPAR6 / P2RY5 / P2Y5 antibody IHC of human Lung, Adenocarcinoma. Immunohistochemistry of formalin-fixed, paraffin-embedded tissue after heat-induced antigen retrieval.



Anti-LPAR6 / P2RY5 / P2Y5 antibody IHC of human Prostate, Carcinoma. Immunohistochemistry of formalin-fixed, paraffin-embedded tissue after heat-induced antigen retrieval.



Anti-LPAR6 / P2RY5 antibody IHC of human thymus. Immunohistochemistry of formalin-fixed, paraffin-embedded tissue after heat-induced antigen retrieval.