

Product datasheet for **TA341015**

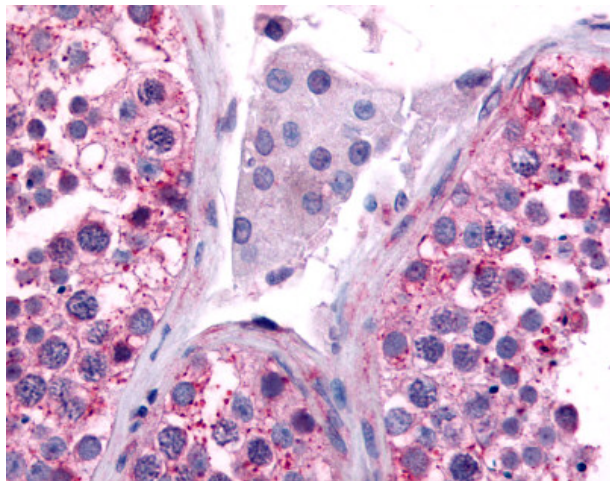
CDC7 Rabbit Polyclonal Antibody

Product data:

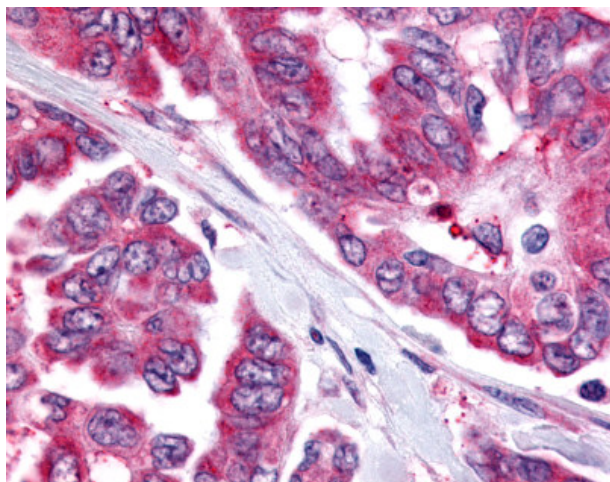
Product Type:	Primary Antibodies
Applications:	IHC
Recommended Dilution:	IHC-P (5.2 µg/ml)
Reactivity:	Human
Host:	Rabbit
Clonality:	Polyclonal
Immunogen:	CDC7 antibody was raised against synthetic 19 amino acid peptide from kinase domain of human CDC7. Percent identity with other species by BLAST analysis: Human, Gorilla (100%); Gibbon (95%).
Formulation:	PBS, 0.1% sodium azide.
Concentration:	lot specific
Purification:	Immunoaffinity purified
Conjugation:	Unconjugated
Storage:	Store at -20°C as received.
Stability:	Stable for 12 months from date of receipt.
Gene Name:	cell division cycle 7
Database Link:	NP_003494 Entrez Gene 8317 Human O00311
Synonyms:	CDC7L1; HsCDC7; Hsk1; huCDC7
Protein Families:	Druggable Genome, Protein Kinase, Stem cell - Pluripotency
Protein Pathways:	Cell cycle



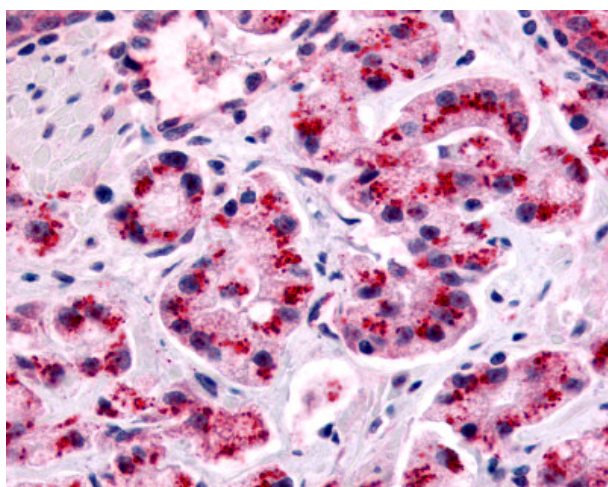
[View online »](#)

Product images:

Anti-CDC7 antibody IHC of human testis. Immunohistochemistry of formalin-fixed, paraffin-embedded tissue after heat-induced antigen retrieval.



Anti-CDC7 antibody IHC of human Ovary, Carcinoma. Immunohistochemistry of formalin-fixed, paraffin-embedded tissue after heat-induced antigen retrieval.



Anti-CDC7 antibody IHC of human Prostate, Carcinoma. Immunohistochemistry of formalin-fixed, paraffin-embedded tissue after heat-induced antigen retrieval.