

Product datasheet for **TA341004**

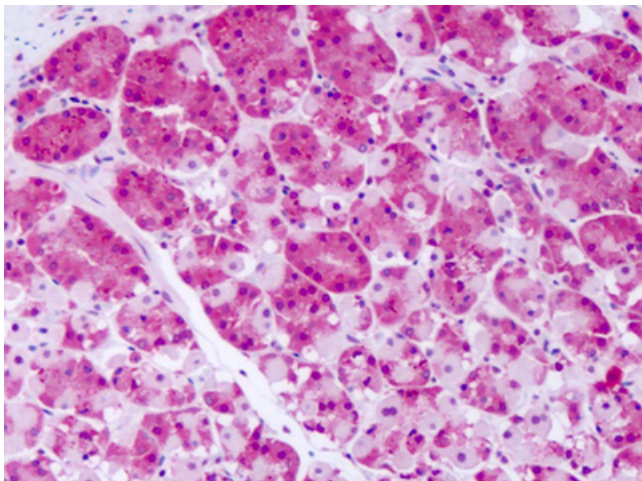
Protein Kinase D2 (PRKD2) Rabbit Polyclonal Antibody

Product data:

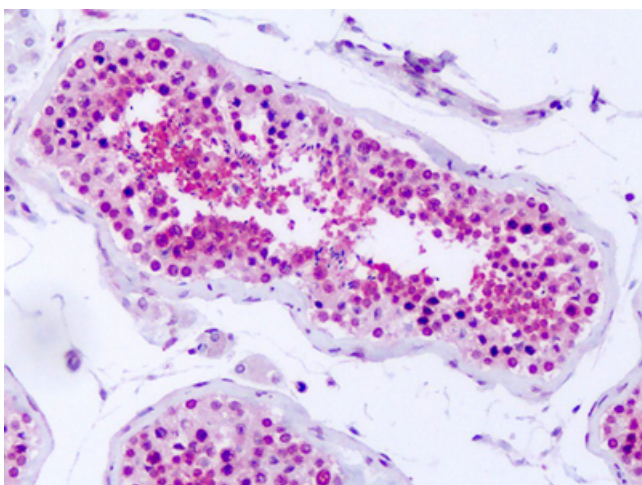
Product Type:	Primary Antibodies
Applications:	IHC
Recommended Dilution:	IHC-P (0.5 µg/ml)
Reactivity:	Human
Host:	Rabbit
Clonality:	Polyclonal
Immunogen:	PRKD2 / PKD2 antibody was raised against synthetic 18 amino acid peptide from internal region of human PRKD2. Percent identity with other species by BLAST analysis: Human, Gorilla, Gibbon, Monkey (100%); Marmoset, Dog (89%); Elephant, Panda (83%).
Formulation:	PBS, 0.1% sodium azide.
Concentration:	lot specific
Purification:	Immunoaffinity purified
Conjugation:	Unconjugated
Storage:	Store at -20°C as received.
Stability:	Stable for 12 months from date of receipt.
Gene Name:	protein kinase D2
Database Link:	NP_057541 Entrez Gene 25865 Human Q9BZL6
Synonyms:	HSPC187; nPKC-D2; PKD2
Protein Families:	Druggable Genome, Protein Kinase



[View online »](#)

Product images:

Anti-PRKD2 antibody IHC of human stomach. Immunohistochemistry of formalin-fixed, paraffin-embedded tissue after heat-induced antigen retrieval. Antibody dilution 0.5 ug/ml.



Anti-PRKD2 antibody IHC of human testis. Immunohistochemistry of formalin-fixed, paraffin-embedded tissue after heat-induced antigen retrieval. Antibody dilution 0.5 ug/ml.