

Product datasheet for **TA340998**

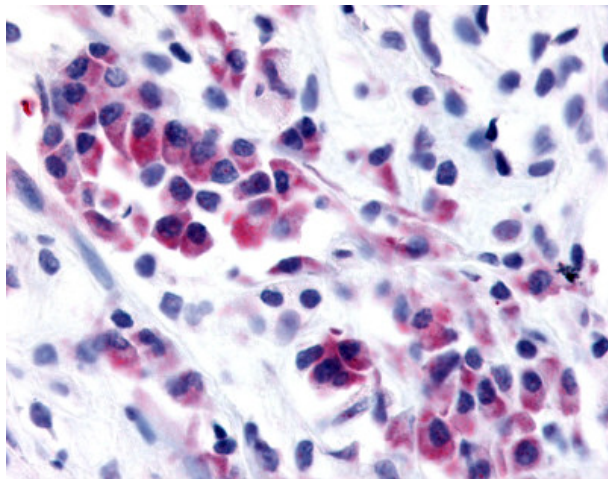
NEK9 Rabbit Polyclonal Antibody

Product data:

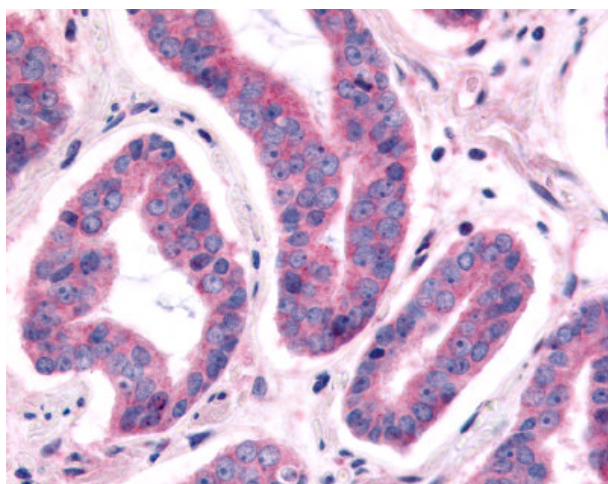
Product Type:	Primary Antibodies
Applications:	IHC
Recommended Dilution:	IHC-P (4 µg/ml)
Reactivity:	Human (Predicted: Rat, Dog, Xenopus)
Host:	Rabbit
Clonality:	Polyclonal
Immunogen:	NEK9 antibody was raised against synthetic 20 amino acid peptide from kinase domain of human NEK9. Percent identity with other species by BLAST analysis: Human, Gorilla, Gibbon, Monkey, Marmoset, Mouse, Elephant, Panda, Bovine, Bat, Horse, Rabbit, Pig, Opossum, Turkey, Chicken, Lizard (100%); Rat, Dog (95%); Xenopus (90%); Pufferfish (80%).
Formulation:	PBS, 0.1% sodium azide.
Concentration:	lot specific
Purification:	Immunoaffinity purified
Conjugation:	Unconjugated
Storage:	Store at -20°C as received.
Stability:	Stable for 12 months from date of receipt.
Gene Name:	NIMA related kinase 9
Database Link:	NP_149107 Entrez Gene 299204 Rat Entrez Gene 490790 Dog Entrez Gene 91754 Human Q8TD19
Synonyms:	APUG; LCCS10; NC; NERCC; NERCC1
Protein Families:	Druggable Genome, Protein Kinase



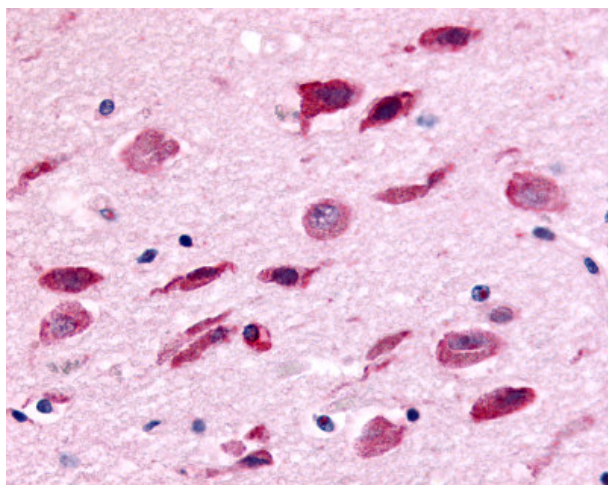
[View online »](#)

Product images:

Anti-NEK9 antibody IHC of human Breast, Carcinoma. Immunohistochemistry of formalin-fixed, paraffin-embedded tissue after heat-induced antigen retrieval.



Anti-NEK9 antibody IHC of human Prostate, Carcinoma. Immunohistochemistry of formalin-fixed, paraffin-embedded tissue after heat-induced antigen retrieval.



Anti-NEK9 antibody IHC of human brain.
Immunohistochemistry of formalin-fixed,
paraffin-embedded tissue after heat-induced
antigen retrieval.