

## Product datasheet for **TA340993**

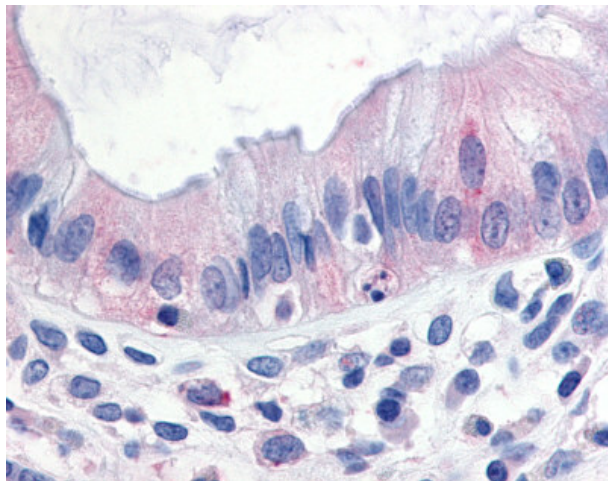
### MAP3K8 Rabbit Polyclonal Antibody

#### Product data:

Product Type:	Primary Antibodies
Applications:	IHC
Recommended Dilution:	IHC-P (15 µg/ml)
Reactivity:	Human (Predicted: Bat, Dog, Hamster)
Host:	Rabbit
Clonality:	Polyclonal
Immunogen:	MAP3K8 / TPL2 antibody was raised against synthetic 19 amino acid peptide from near N-terminus of human MAP3K8. Percent identity with other species by BLAST analysis: Human, Gorilla, Gibbon, Monkey, Marmoset, Bovine (100%); Hamster, Panda, Bat, Dog (95%); Mouse, Rat, Rabbit, Pig (89%); Elephant, Horse, Platypus (84%).
Formulation:	PBS, 0.1% sodium azide.
Concentration:	lot specific
Purification:	Immunoaffinity purified
Conjugation:	Unconjugated
Storage:	Store at -20°C as received.
Stability:	Stable for 12 months from date of receipt.
Gene Name:	mitogen-activated protein kinase kinase kinase 8
Database Link:	<a href="#">NP_005195</a> <a href="#">Entrez Gene 487085 Dog</a> <a href="#">Entrez Gene 1326 Human</a> <a href="#">P41279</a>
Synonyms:	AURA2; c-COT; COT; EST; ESTE; MEKK8; Tpl-2; TPL2
Protein Families:	Druggable Genome, Protein Kinase
Protein Pathways:	MAPK signaling pathway, T cell receptor signaling pathway, Toll-like receptor signaling pathway



[View online »](#)

**Product images:**

Anti-MAP3K8 antibody IHC of human colon. Immunohistochemistry of formalin-fixed, paraffin-embedded tissue after heat-induced antigen retrieval.