

## Product datasheet for **TA340992**

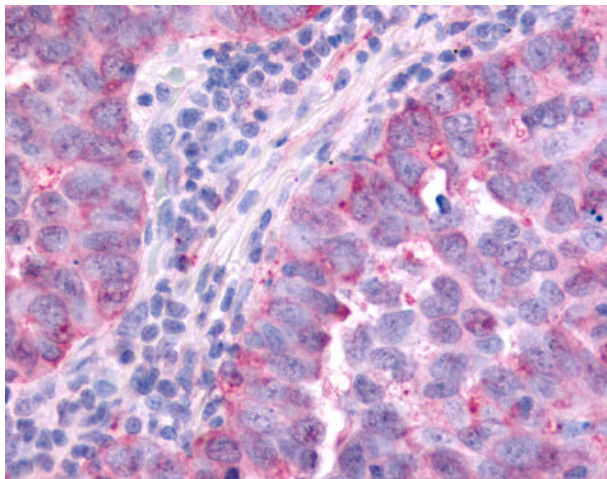
### PAK6 Rabbit Polyclonal Antibody

#### Product data:

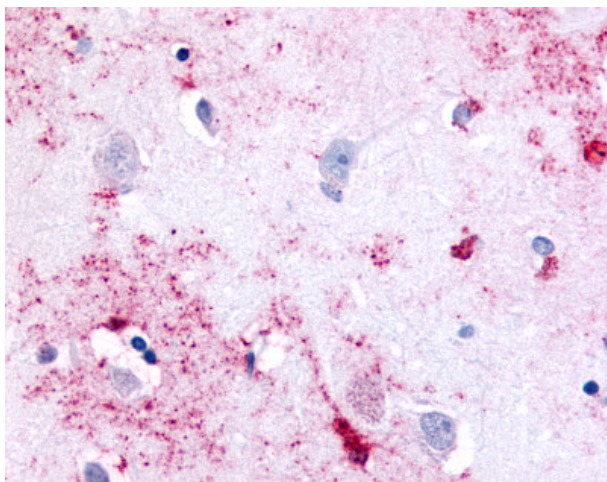
Product Type:	Primary Antibodies
Applications:	IHC
Recommended Dilution:	IHC-P (3.5 µg/ml)
Reactivity:	Human (Predicted: Goat, Rabbit)
Host:	Rabbit
Clonality:	Polyclonal
Immunogen:	PAK6 antibody was raised against synthetic 18 amino acid peptide from Linker domain of human PAK6. Percent identity with other species by BLAST analysis: Human, Gorilla, Orangutan, Gibbon, Monkey, Marmoset, Dog, Horse (100%); Goat, Elephant, Panda, Rabbit (94%); Hamster, Bovine (89%); Mouse, Bat (83%).
Formulation:	PBS, 0.1% sodium azide.
Concentration:	lot specific
Purification:	Immunoaffinity purified
Conjugation:	Unconjugated
Storage:	Store at -20°C as received.
Stability:	Stable for 12 months from date of receipt.
Gene Name:	p21 (RAC1) activated kinase 6
Database Link:	<a href="#">NP_064553</a> <a href="#">Entrez Gene 56924 Human</a> <a href="#">Q9NQU5</a>
Synonyms:	PAK5
Protein Families:	Druggable Genome, Protein Kinase
Protein Pathways:	Axon guidance, ErbB signaling pathway, Focal adhesion, Regulation of actin cytoskeleton, Renal cell carcinoma, T cell receptor signaling pathway



[View online »](#)

**Product images:**

Anti-PAK6 antibody IHC of human Lung, Non-Small Cell Carcinoma. Immunohistochemistry of formalin-fixed, paraffin-embedded tissue after heat-induced antigen retrieval.



Anti-PAK6 antibody IHC of human brain, neurons and glia. Immunohistochemistry of formalin-fixed, paraffin-embedded tissue after heat-induced antigen retrieval.