

## Product datasheet for **TA340991**

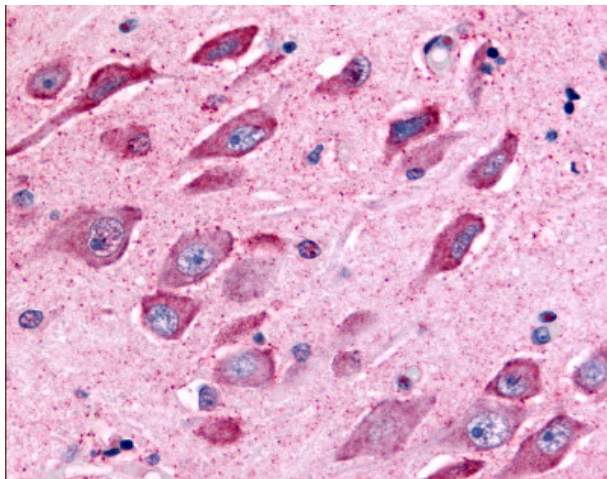
### TAOK1 Rabbit Polyclonal Antibody

#### Product data:

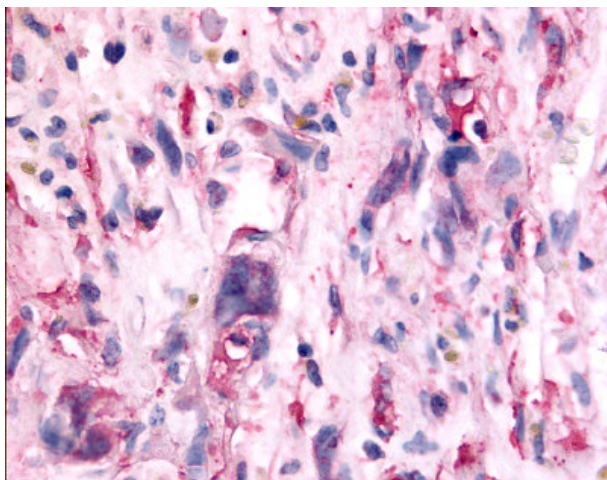
Product Type:	Primary Antibodies
Applications:	IHC
Recommended Dilution:	IHC-P (4.4 µg/ml)
Reactivity:	Human (Predicted: Chicken, Zebrafish)
Host:	Rabbit
Clonality:	Polyclonal
Immunogen:	TAOK1 / TAO1 antibody was raised against synthetic 16 amino acid peptide from internal region of human TAOK1. Percent identity with other species by BLAST analysis: Human, Gorilla, Gibbon, Monkey, Marmoset, Mouse, Rat, Hamster, Elephant, Panda, Bovine, Dog, Bat, Horse, Rabbit, Pig, Platypus, Xenopus (100%); Opossum, Turkey, Chicken, Zebrafish (94%); Stickleback, Pufferfish (88%).
Formulation:	PBS, 0.1% sodium azide.
Concentration:	lot specific
Purification:	Immunoaffinity purified
Conjugation:	Unconjugated
Storage:	Store at -20°C as received.
Stability:	Stable for 12 months from date of receipt.
Gene Name:	TAO kinase 1
Database Link:	<a href="#">NP_065842</a> <a href="#">Entrez Gene 57551 Human</a> <a href="#">Q7L7X3</a>
Synonyms:	hKFC-B; hTAOK1; KFC-B; MAP3K16; MARKK; PSK-2; PSK2; TAO1
Protein Families:	Druggable Genome, Protein Kinase
Protein Pathways:	MAPK signaling pathway



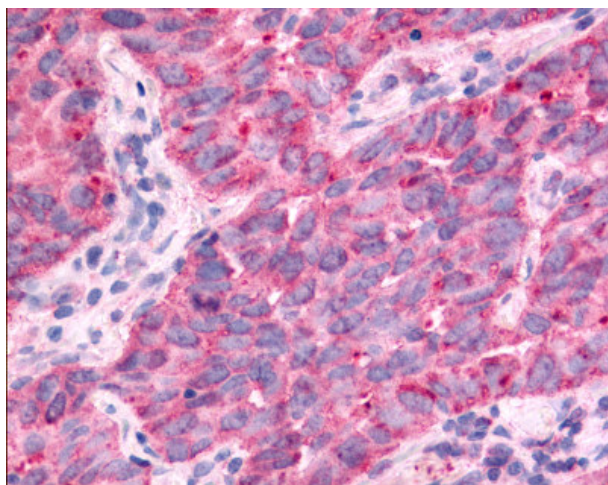
[View online »](#)

**Product images:**

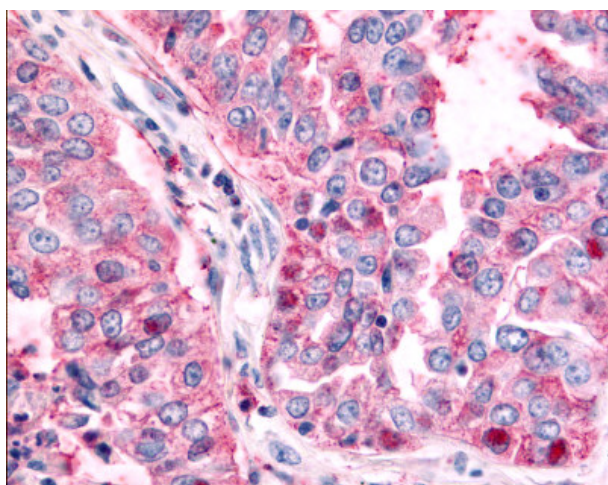
Anti-TAOK1 antibody IHC of human brain, hippocampus. Immunohistochemistry of formalin-fixed, paraffin-embedded tissue after heat-induced antigen retrieval.



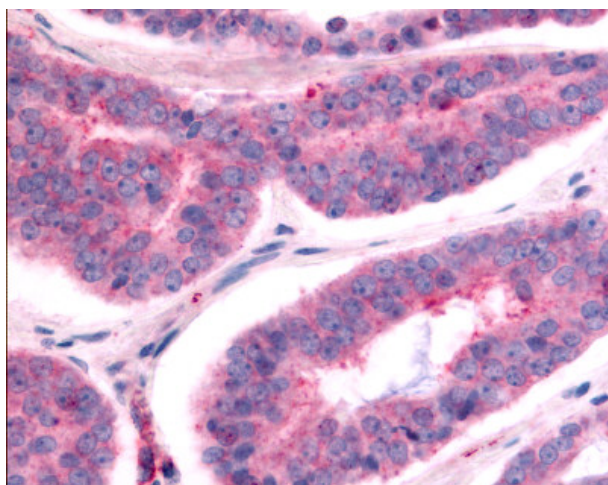
Anti-TAOK1 / TAO1 antibody IHC of human Brain, Glioblastoma. Immunohistochemistry of formalin-fixed, paraffin-embedded tissue after heat-induced antigen retrieval.



Anti-TAOK1 / TAO1 antibody IHC of human Lung, Non-Small Cell Carcinoma. Immunohistochemistry of formalin-fixed, paraffin-embedded tissue after heat-induced antigen retrieval.



Anti-TAOK1 / TAO1 antibody IHC of human Lung, Non-Small Cell Carcinoma. Immunohistochemistry of formalin-fixed, paraffin-embedded tissue after heat-induced antigen retrieval.



Anti-TAOK1 / TAO1 antibody IHC of human Prostate, Carcinoma. Immunohistochemistry of formalin-fixed, paraffin-embedded tissue after heat-induced antigen retrieval.