

Product datasheet for **TA340990**

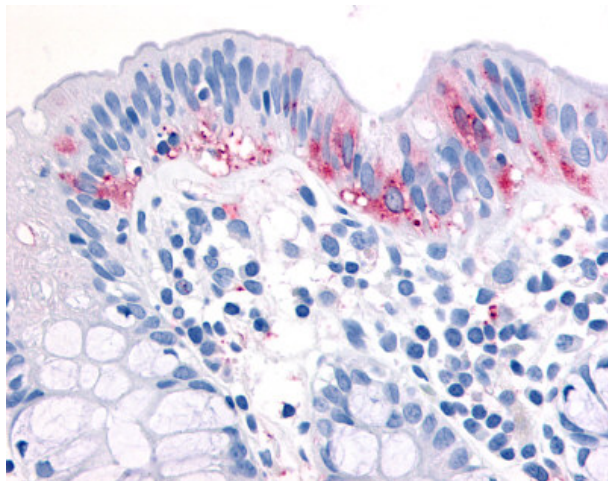
MAP3K8 Rabbit Polyclonal Antibody

Product data:

Product Type:	Primary Antibodies
Applications:	IHC
Recommended Dilution:	IHC-P (10 µg/ml)
Reactivity:	Human (Predicted: Mouse, Rat, Hamster, Horse)
Host:	Rabbit
Clonality:	Polyclonal
Immunogen:	MAP3K8 / TPL2 antibody was raised against synthetic 18 amino acid peptide from near C-terminus of human MAP3K8. Percent identity with other species by BLAST analysis: Human, Gorilla, Gibbon, Marmoset, Elephant, Bovine, Dog, Bat (100%); Mouse, Rat, Hamster, Panda, Horse (94%).
Formulation:	PBS, 0.1% sodium azide.
Concentration:	lot specific
Purification:	Immunoaffinity purified
Conjugation:	Unconjugated
Storage:	Store at -20°C as received.
Stability:	Stable for 12 months from date of receipt.
Gene Name:	mitogen-activated protein kinase kinase kinase 8
Database Link:	NP_005195 Entrez Gene 26410 Mouse Entrez Gene 116596 Rat Entrez Gene 1326 Human P41279
Synonyms:	AURA2; c-COT; COT; EST; ESTE; MEKK8; Tpl-2; TPL2
Protein Families:	Druggable Genome, Protein Kinase
Protein Pathways:	MAPK signaling pathway, T cell receptor signaling pathway, Toll-like receptor signaling pathway



[View online »](#)

Product images:

Anti-MAP3K8 antibody IHC of human colon. Immunohistochemistry of formalin-fixed, paraffin-embedded tissue after heat-induced antigen retrieval.