

Product datasheet for **TA340988**

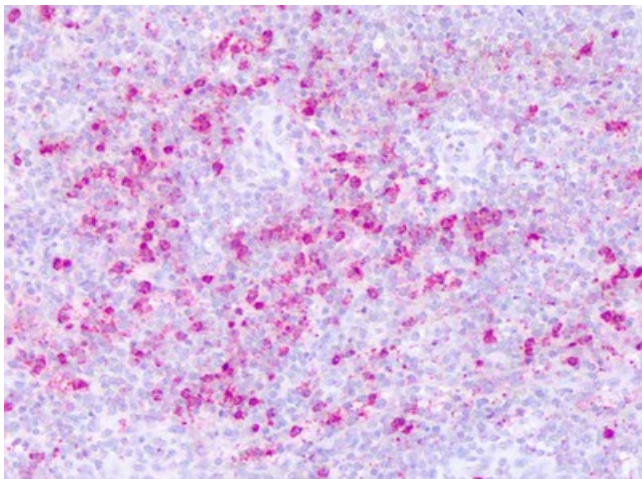
PTP epsilon (PTPRE) Rabbit Polyclonal Antibody

Product data:

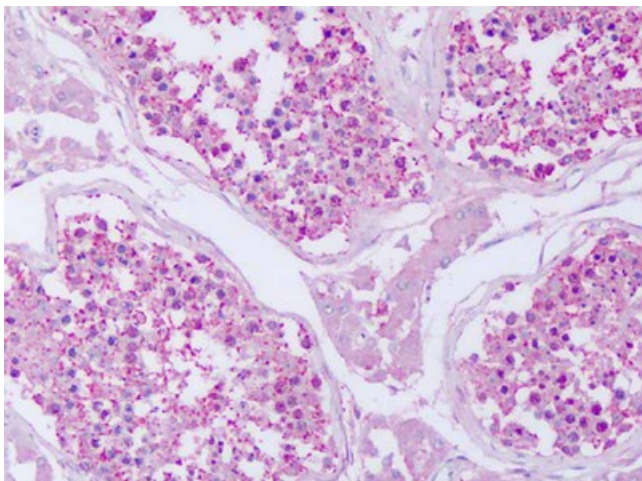
Product Type:	Primary Antibodies
Applications:	IHC
Recommended Dilution:	IHC-P (3 - 32 µg/ml)
Reactivity:	Human (Predicted: Monkey)
Host:	Rabbit
Clonality:	Polyclonal
Immunogen:	PTPRE / PTP Epsilon antibody was raised against synthetic 18 amino acid peptide from cytoplasmic domain of human PTPRE. Percent identity with other species by BLAST analysis: Human, Gibbon (100%); Monkey (94%); Marmoset, Rat, Hamster, Panda, Dog, Bovine (89%); Mouse, Horse (83%).
Formulation:	PBS, 0.1% sodium azide.
Concentration:	lot specific
Purification:	Immunoaffinity purified
Conjugation:	Unconjugated
Storage:	Store at -20°C as received.
Stability:	Stable for 12 months from date of receipt.
Gene Name:	protein tyrosine phosphatase, receptor type E
Database Link:	NP_006495 Entrez Gene 704188 Monkey Entrez Gene 5791 Human P23469
Synonyms:	HPTPE; PTPE; R-PTP-EPSILON
Protein Families:	Druggable Genome, Phosphatase, Transmembrane



[View online »](#)

Product images:

Anti-PTPRE antibody IHC of human spleen. Immunohistochemistry of formalin-fixed, paraffin-embedded tissue after heat-induced antigen retrieval. Antibody dilution 3-32 ug/ml.



Anti-PTPRE antibody IHC of human testis. Immunohistochemistry of formalin-fixed, paraffin-embedded tissue after heat-induced antigen retrieval. Antibody dilution 3-32 ug/ml.