

## Product datasheet for **TA340985**

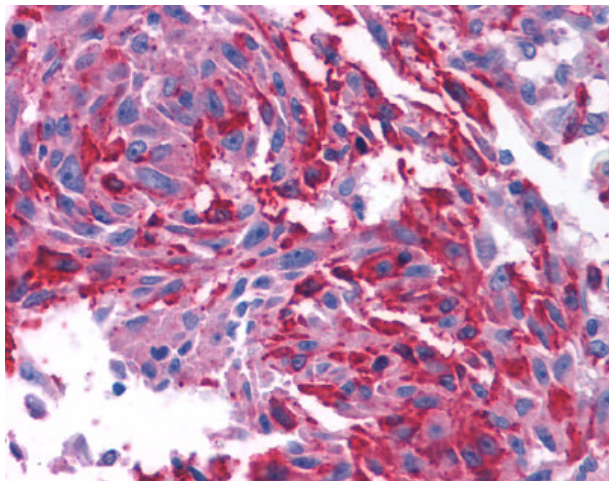
### CRF1 (CRHR1) Rabbit Polyclonal Antibody

#### Product data:

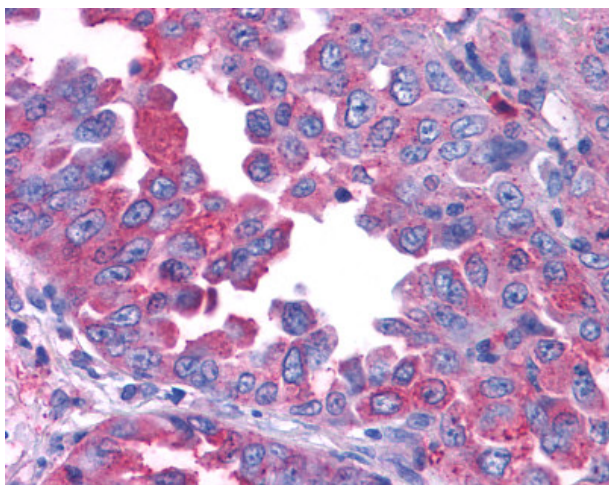
Product Type:	Primary Antibodies
Applications:	IHC
Recommended Dilution:	IHC-P (1 - 2 µg/ml)
Reactivity:	Human (Predicted: Bat, Bovine, Horse)
Host:	Rabbit
Clonality:	Polyclonal
Immunogen:	CRFR1 / CRHR1 antibody was raised against synthetic 16 amino acid peptide from N-terminal extracellular domain of human CRF1. Percent identity with other species by BLAST analysis: Human, Gorilla, Gibbon, Monkey, Marmoset, Mouse, Rat, Hamster, Elephant (100%); Bat, Bovine, Horse (94%); Panda, Dog, Pig, Opossum, Turkey, Chicken, Lizard (88%); Sheep (81%).
Formulation:	PBS, 0.1% sodium azide.
Concentration:	lot specific
Purification:	Immunoaffinity purified
Conjugation:	Unconjugated
Storage:	Store at -20°C as received.
Stability:	Stable for 12 months from date of receipt.
Gene Name:	corticotropin releasing hormone receptor 1
Database Link:	<a href="#">NP_004373</a> <a href="#">Entrez Gene 1394 Human P34998</a>
Synonyms:	CRF-R; CRF-R-1; CRF-R1; CRF1; CRFR-1; CRFR1; CRH-R-1; CRH-R1; CRHR; CRHR1L
Protein Families:	Druggable Genome, GPCR, Transmembrane
Protein Pathways:	Long-term depression, Neuroactive ligand-receptor interaction



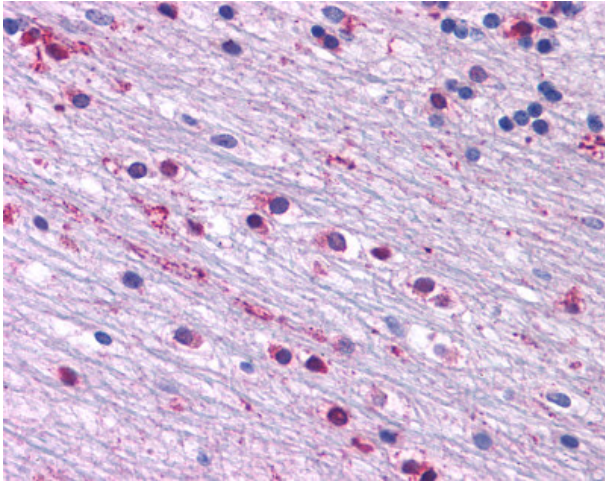
[View online »](#)

**Product images:**

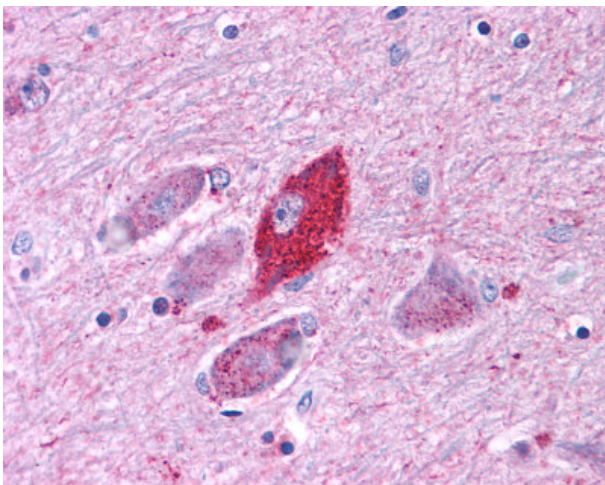
Anti-CRFR1 / CRHR1 antibody IHC of human Skin, Melanoma. Immunohistochemistry of formalin-fixed, paraffin-embedded tissue after heat-induced antigen retrieval.



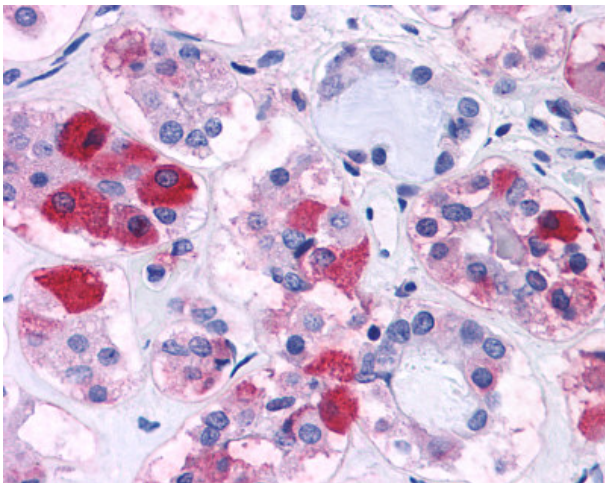
Anti-CRFR1 / CRHR1 antibody IHC of human Lung, Non-Small Cell Carcinoma. Immunohistochemistry of formalin-fixed, paraffin-embedded tissue after heat-induced antigen retrieval.



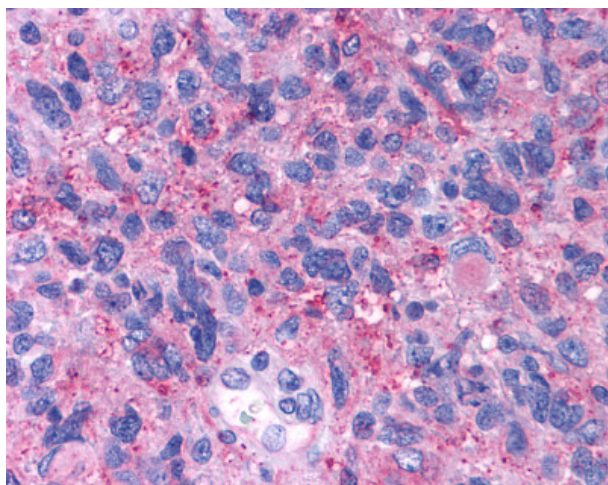
Anti-CRF1 / CRHR1 antibody IHC of human brain, cerebellum glia. Immunohistochemistry of formalin-fixed, paraffin-embedded tissue after heat-induced antigen retrieval.



Anti-CRF1 / CRHR1 antibody IHC of human brain, amygdala. Immunohistochemistry of formalin-fixed, paraffin-embedded tissue after heat-induced antigen retrieval.



Anti-CRF1 antibody IHC of human pituitary. Immunohistochemistry of formalin-fixed, paraffin-embedded tissue after heat-induced antigen retrieval.



Anti-CRFR1 / CRHR1 antibody IHC of human brain, glioblastoma. Immunohistochemistry of formalin-fixed, paraffin-embedded tissue after heat-induced antigen retrieval.