

Product datasheet for **TA340980**

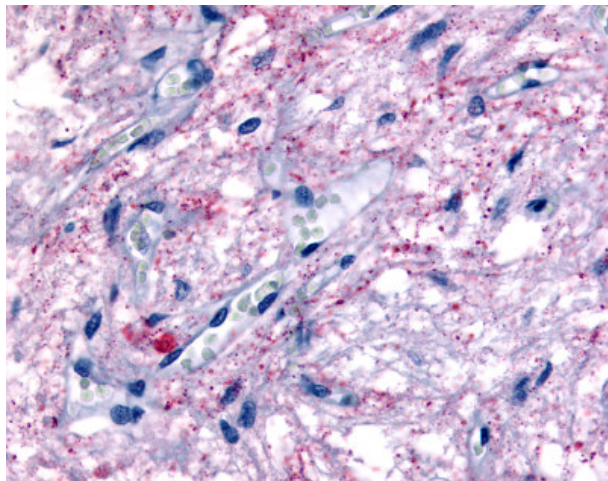
Melatonin Related Receptor (GPR50) Rabbit Polyclonal Antibody

Product data:

Product Type:	Primary Antibodies
Applications:	IHC
Recommended Dilution:	IHC-P (3 - 30 µg/ml)
Reactivity:	Human (Predicted: Mouse, Rat, Bovine, Rabbit)
Host:	Rabbit
Clonality:	Polyclonal
Immunogen:	GPR50 antibody was raised against synthetic 18 amino acid peptide from 3rd cytoplasmic domain of human GPR50. Percent identity with other species by BLAST analysis: Human, Gorilla, Monkey, Marmoset, Sheep, Dog (100%); Gibbon, Mouse, Rat, Panda, Bovine, Rabbit (94%); Bat (89%); Elephant (83%).
Formulation:	PBS, 0.1% sodium azide.
Concentration:	lot specific
Purification:	Immunoaffinity purified
Conjugation:	Unconjugated
Storage:	Store at -20°C as received.
Stability:	Stable for 12 months from date of receipt.
Gene Name:	G protein-coupled receptor 50
Database Link:	NP_004215 Entrez Gene 14765 Mouse Entrez Gene 117097 Rat Entrez Gene 9248 Human Q13585
Synonyms:	H9; Mel1c
Protein Families:	Druggable Genome, GPCR, Transmembrane
Protein Pathways:	Neuroactive ligand-receptor interaction



[View online »](#)

Product images:

Anti-GPR50 antibody IHC of human pituitary. Immunohistochemistry of formalin-fixed, paraffin-embedded tissue after heat-induced antigen retrieval.