

Product datasheet for **TA340979**

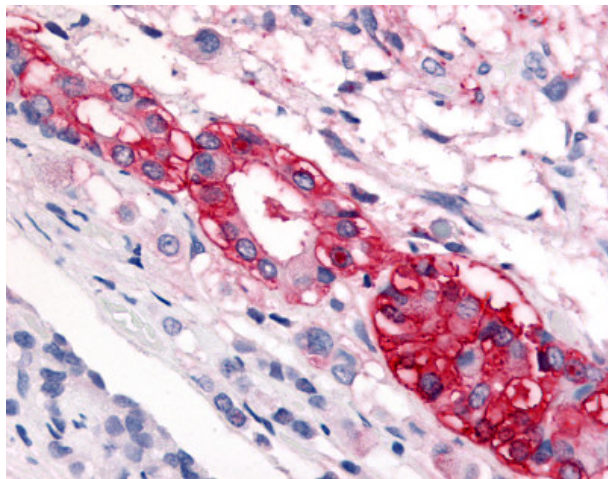
CRF1 (CRHR1) Rabbit Polyclonal Antibody

Product data:

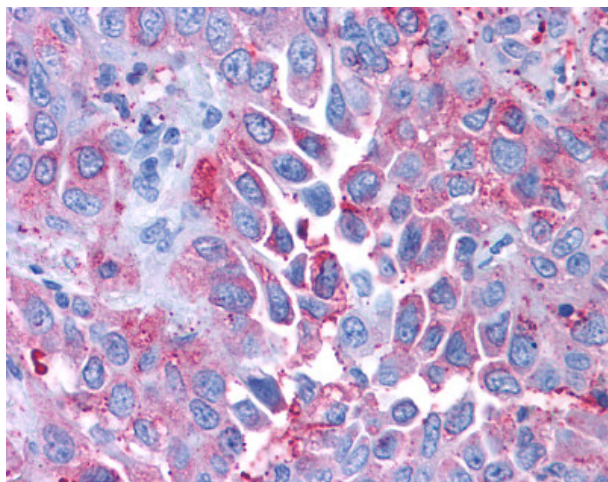
Product Type:	Primary Antibodies
Applications:	IHC
Recommended Dilution:	IHC-P (20 µg/ml)
Reactivity:	Human (Predicted: Bat)
Host:	Rabbit
Clonality:	Polyclonal
Immunogen:	CRFR1 / CRHR1 antibody was raised against synthetic 18 amino acid peptide from 1st extracellular domain of human CRF1. Percent identity with other species by BLAST analysis: Human, Gorilla, Monkey, Sheep, Hamster, Dog, Bovine, Horse, Pig, Opossum (100%); Elephant, Panda, Bat (94%); Marmoset, Mouse, Rat, Seabass, Stickleback, Pufferfish (89%); Turkey, Chicken, Lizard, Zebrafish (83%).
Formulation:	PBS, 0.1% sodium azide.
Concentration:	lot specific
Purification:	Immunoaffinity purified
Conjugation:	Unconjugated
Storage:	Store at -20°C as received.
Stability:	Stable for 12 months from date of receipt.
Gene Name:	corticotropin releasing hormone receptor 1
Database Link:	NP_004373 Entrez Gene 1394 Human P34998
Synonyms:	CRF-R; CRF-R-1; CRF-R1; CRF1; CRFR-1; CRFR1; CRH-R-1; CRH-R1; CRHR; CRHR1L
Protein Families:	Druggable Genome, GPCR, Transmembrane
Protein Pathways:	Long-term depression, Neuroactive ligand-receptor interaction



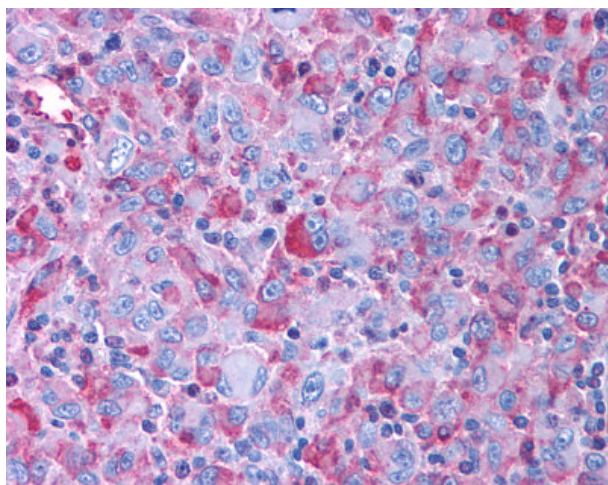
[View online »](#)

Product images:

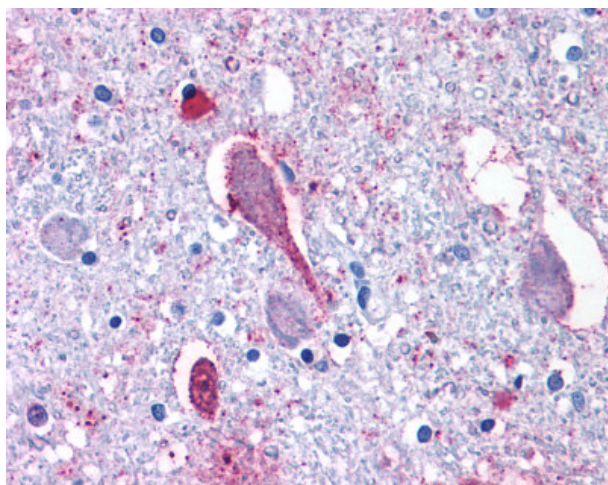
Anti-CRF1 antibody IHC of human pituitary. Immunohistochemistry of formalin-fixed, paraffin-embedded tissue after heat-induced antigen retrieval.



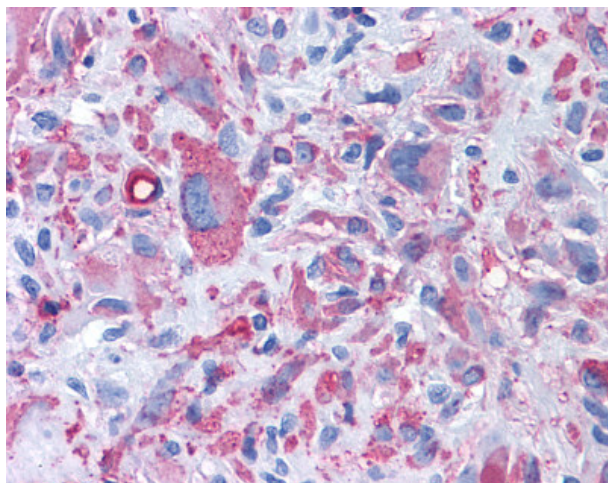
Anti-CRFR1 / CRHR1 antibody IHC of human Lung, Non-Small Cell Carcinoma. Immunohistochemistry of formalin-fixed, paraffin-embedded tissue after heat-induced antigen retrieval.



Anti-CRFR1 / CRHR1 antibody IHC of human Skin, Melanoma. Immunohistochemistry of formalin-fixed, paraffin-embedded tissue after heat-induced antigen retrieval.



Anti-CRFR1 / CRHR1 antibody IHC of human brain, putamen. Immunohistochemistry of formalin-fixed, paraffin-embedded tissue after heat-induced antigen retrieval.



Anti-CRFR1 / CRHR1 antibody IHC of human Brain, Glioblastoma. Immunohistochemistry of formalin-fixed, paraffin-embedded tissue after heat-induced antigen retrieval.