

## Product datasheet for **TA340970**

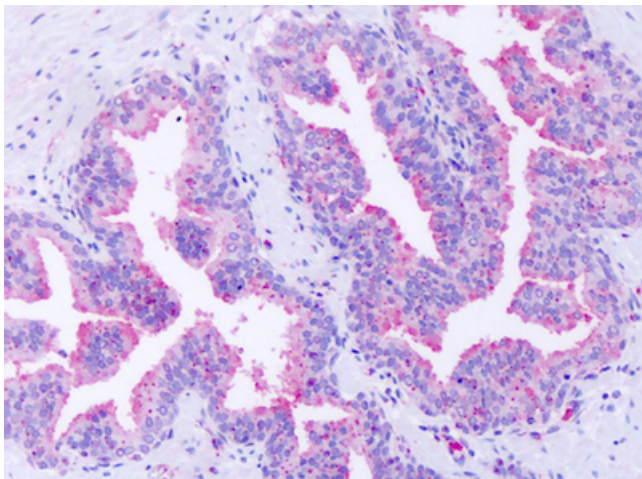
### GPR63 Rabbit Polyclonal Antibody

#### Product data:

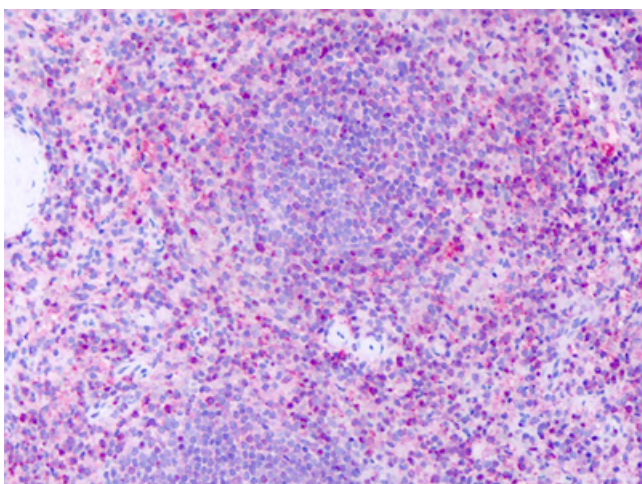
Product Type:	Primary Antibodies
Applications:	IHC
Recommended Dilution:	IHC-P (19 µg/ml)
Reactivity:	Human (Predicted: Monkey, Dog)
Host:	Rabbit
Clonality:	Polyclonal
Immunogen:	GPR63 antibody was raised against synthetic 15 amino acid peptide from 3rd extracellular domain of human GPR63. Percent identity with other species by BLAST analysis: Human, Gorilla, Gibbon, Monkey, Mouse, Rat, Hamster, Bovine, Bat, Pig (100%); Marmoset, Dog (93%); Elephant, Panda, Horse (87%); Rabbit, Opossum, Turkey, Chicken (80%).
Formulation:	PBS, 0.1% sodium azide.
Concentration:	lot specific
Purification:	Immunoaffinity purified
Conjugation:	Unconjugated
Storage:	Store at -20°C as received.
Stability:	Stable for 12 months from date of receipt.
Gene Name:	G protein-coupled receptor 63
Database Link:	<a href="#">NP_110411</a> <a href="#">Entrez Gene 100685057 Dog</a> <a href="#">Entrez Gene 704888 Monkey</a> <a href="#">Entrez Gene 81491 Human</a> <a href="#">Q9BZJ6</a>
Synonyms:	PSP24(beta); PSP24B
Protein Families:	Druggable Genome, GPCR, Transmembrane



[View online »](#)

**Product images:**

Anti-GPR63 antibody IHC of human prostate. Immunohistochemistry of formalin-fixed, paraffin-embedded tissue after heat-induced antigen retrieval. Antibody dilution 19 ug/ml.



Anti-GPR63 antibody IHC of human spleen. Immunohistochemistry of formalin-fixed, paraffin-embedded tissue after heat-induced antigen retrieval. Antibody dilution 19 ug/ml.