

Product datasheet for **TA340969**

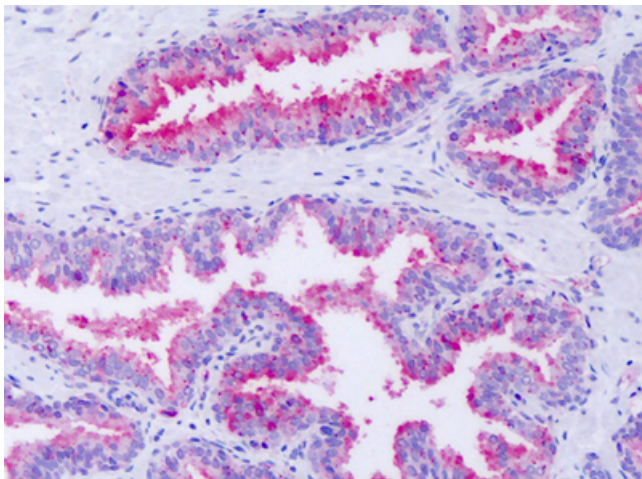
GPR63 Rabbit Polyclonal Antibody

Product data:

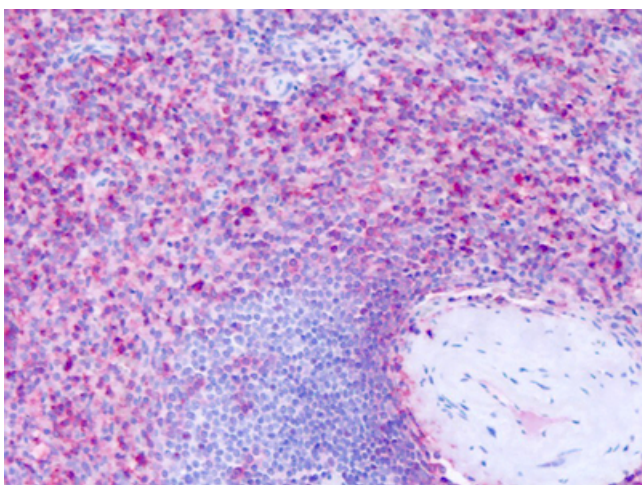
Product Type:	Primary Antibodies
Applications:	IHC
Recommended Dilution:	IHC-P (13 µg/ml)
Reactivity:	Human
Host:	Rabbit
Clonality:	Polyclonal
Immunogen:	GPR63 antibody was raised against synthetic 14 amino acid peptide from 1st cytoplasmic domain of human GPR63. Percent identity with other species by BLAST analysis: Human, Gorilla, Gibbon, Monkey, Marmoset, Mouse, Rat, Elephant, Panda, Bovine, Dog, Bat, Horse, Rabbit, Pig, Opossum, Turkey, Chicken, Xenopus (100%); Lizard (93%); Stickleback, Pufferfish, Zebrafish (86%).
Formulation:	PBS, 0.1% sodium azide.
Concentration:	lot specific
Purification:	Immunoaffinity purified
Conjugation:	Unconjugated
Storage:	Store at -20°C as received.
Stability:	Stable for 12 months from date of receipt.
Gene Name:	G protein-coupled receptor 63
Database Link:	NP_110411 Entrez Gene 81491 Human Q9BZJ6
Synonyms:	PSP24(beta); PSP24B
Protein Families:	Druggable Genome, GPCR, Transmembrane



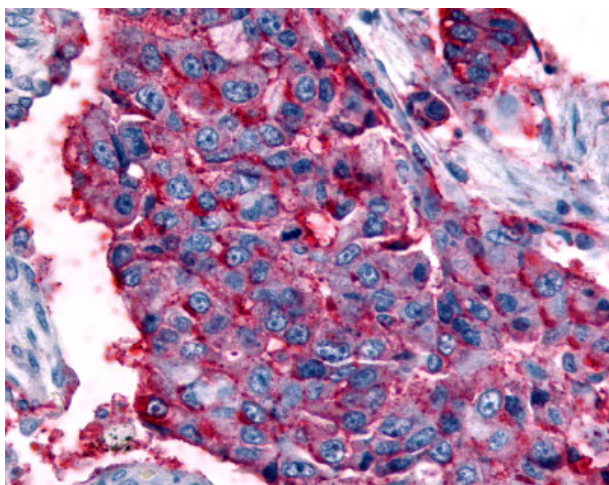
[View online »](#)

Product images:

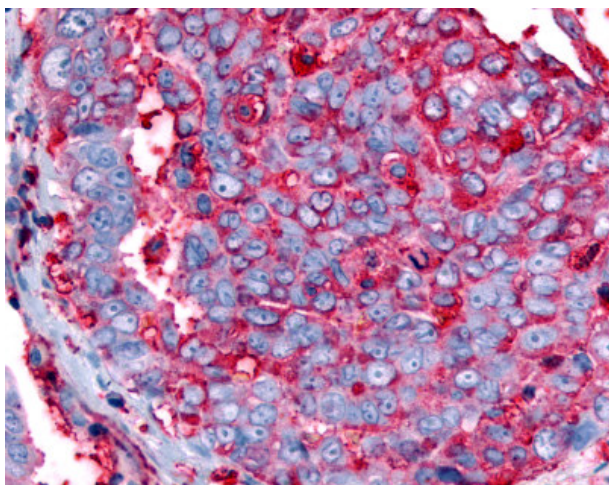
Anti-GPR63 antibody IHC of human prostate. Immunohistochemistry of formalin-fixed, paraffin-embedded tissue after heat-induced antigen retrieval. Antibody dilution 13 ug/ml.



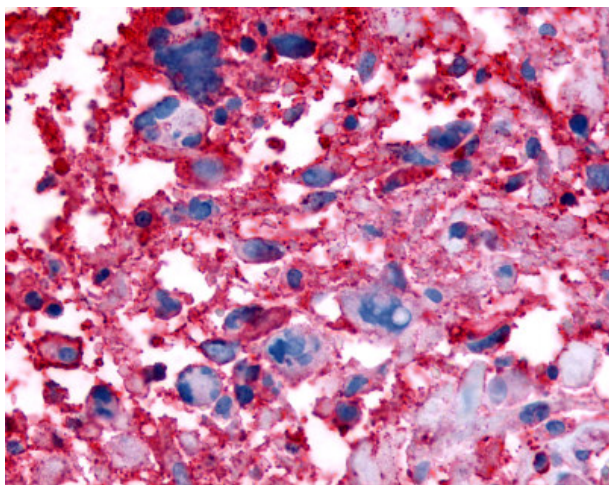
Anti-GPR63 antibody IHC of human spleen. Immunohistochemistry of formalin-fixed, paraffin-embedded tissue after heat-induced antigen retrieval. Antibody dilution 13 ug/ml.



Anti-GPR63 antibody IHC of human Lung, Non-Small Cell Carcinoma. Immunohistochemistry of formalin-fixed, paraffin-embedded tissue after heat-induced antigen retrieval.



Anti-GPR63 antibody IHC of human Ovary, Carcinoma. Immunohistochemistry of formalin-fixed, paraffin-embedded tissue after heat-induced antigen retrieval.



Anti-GPR63 antibody IHC of human Brain, Glioblastoma. Immunohistochemistry of formalin-fixed, paraffin-embedded tissue after heat-induced antigen retrieval.