

## Product datasheet for **TA340967**

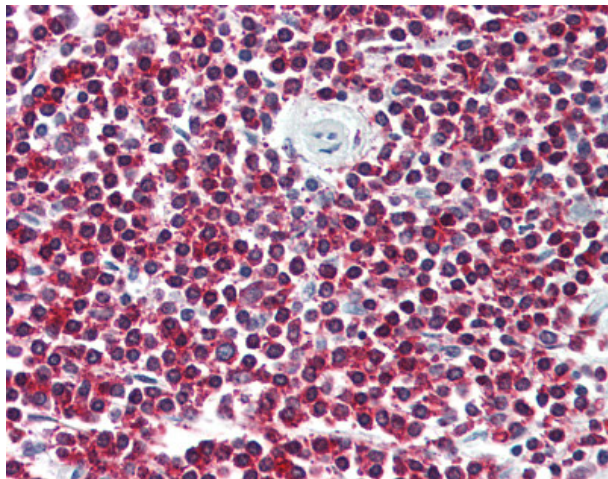
### LGR6 Rabbit Polyclonal Antibody

#### Product data:

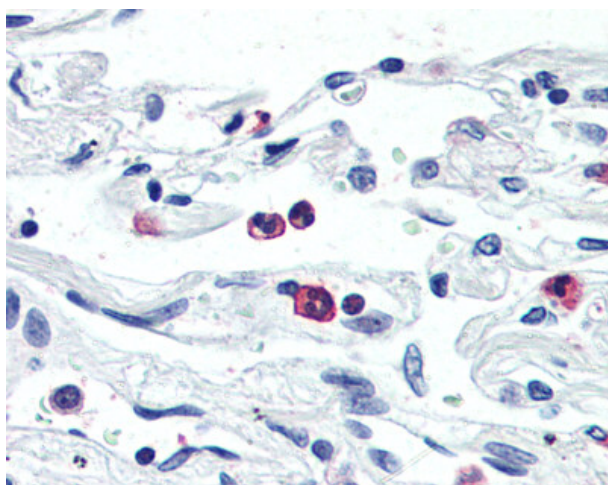
Product Type:	Primary Antibodies
Applications:	IHC
Recommended Dilution:	IHC-P (10 µg/ml)
Reactivity:	Human
Host:	Rabbit
Clonality:	Polyclonal
Immunogen:	LGR6 antibody was raised against synthetic 18 amino acid peptide from internal region of human LGR6. Percent identity with other species by BLAST analysis: Human, Gorilla (100%); Gibbon (94%); Marmoset, Mouse (89%); Rat, Hamster, Panda, Dog, Horse (83%).
Formulation:	PBS, 0.1% sodium azide.
Concentration:	lot specific
Purification:	Immunoaffinity purified
Conjugation:	Unconjugated
Storage:	Store at -20°C as received.
Stability:	Stable for 12 months from date of receipt.
Gene Name:	leucine-rich repeat containing G protein-coupled receptor 6
Database Link:	<a href="#">NP_067649</a> <a href="#">Entrez Gene 59352 Human</a> <a href="#">Q9HBX8</a>
Synonyms:	GPCR; VTS20631
Protein Families:	Druggable Genome, Transmembrane



[View online »](#)

**Product images:**

Anti-LGR6 antibody IHC of human spleen. Immunohistochemistry of formalin-fixed, paraffin-embedded tissue after heat-induced antigen retrieval.



Anti-LGR6 antibody IHC of human neutrophils. Immunohistochemistry of formalin-fixed, paraffin-embedded tissue after heat-induced antigen retrieval.