

Product datasheet for **TA340966**

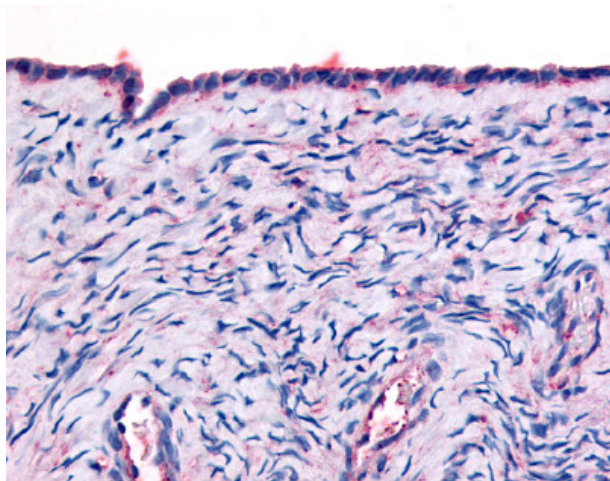
Thyroid Hormone Receptor alpha (THRA) Rabbit Polyclonal Antibody

Product data:

Product Type:	Primary Antibodies
Applications:	IHC
Recommended Dilution:	IHC-P (10 - 15 µg/ml)
Reactivity:	Human (Predicted: Horse)
Host:	Rabbit
Clonality:	Polyclonal
Immunogen:	THRA / THR Alpha antibody was raised against synthetic 16 amino acid peptide from ligand-binding domain of human THRA. Percent identity with other species by BLAST analysis: Human, Gorilla, Gibbon, Monkey (100%); Horse (94%); Hamster (88%); Rat (81%).
Formulation:	PBS, 0.1% sodium azide.
Concentration:	lot specific
Purification:	Immunoaffinity purified
Conjugation:	Unconjugated
Storage:	Store at -20°C as received.
Stability:	Stable for 12 months from date of receipt.
Gene Name:	thyroid hormone receptor, alpha
Database Link:	NP_003241 Entrez Gene 7067 Human P10827
Synonyms:	AR7; c-ERBA-1; CHNG6; EAR7; ERB-T-1; ERBA; ERBA1; NR1A1; THRA1; THRA2
Protein Families:	Druggable Genome, Nuclear Hormone Receptor, Transcription Factors
Protein Pathways:	Neuroactive ligand-receptor interaction



[View online »](#)

Product images:

Anti-THRA antibody IHC of human surface epithelium. Immunohistochemistry of formalin-fixed, paraffin-embedded tissue after heat-induced antigen retrieval.