

## Product datasheet for **TA340955**

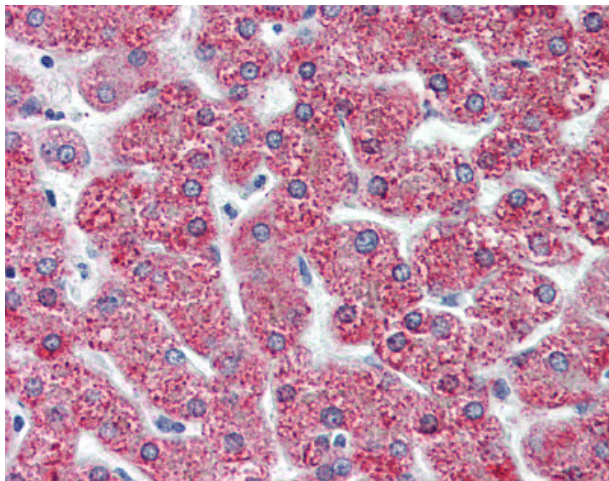
### CysLT2 (CYSLTR2) Rabbit Polyclonal Antibody

#### Product data:

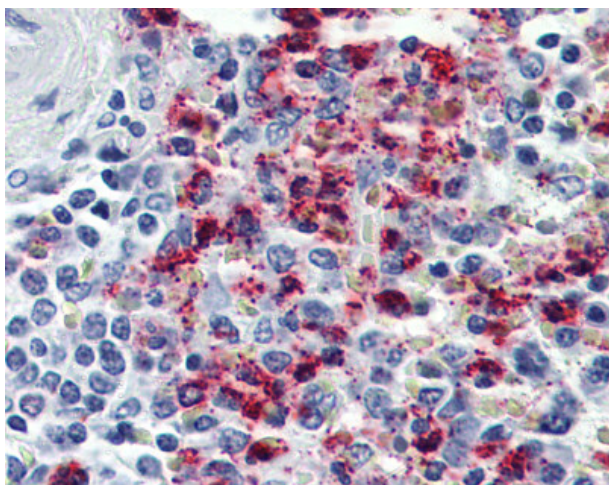
Product Type:	Primary Antibodies
Applications:	IHC
Recommended Dilution:	IHC-P (10 µg/ml)
Reactivity:	Human
Host:	Rabbit
Clonality:	Polyclonal
Immunogen:	CYSLT2 / CYSLTR2 antibody was raised against synthetic 15 amino acid peptide from N-Terminus of human CYSLTR2 / CYSLT2. Percent identity with other species by BLAST analysis: Human, Gorilla (100%); Horse (80%).
Formulation:	PBS, 0.1% sodium azide.
Concentration:	lot specific
Purification:	Immunoaffinity purified
Conjugation:	Unconjugated
Storage:	Store at -20°C as received.
Stability:	Stable for 12 months from date of receipt.
Gene Name:	cysteinyl leukotriene receptor 2
Database Link:	<a href="#">NP_065110</a> <a href="#">Entrez Gene 57105 Human</a> <a href="#">Q9NS75</a>
Synonyms:	CYSLT2; CYSLT2R; GPCR21; HG57; hGPCR21; HPN321; KPG_011; PSEC0146
Note:	Immunohistochemistry with formalin-fixed paraffin-embedded tissues requires pretreatment with Proteinase K.
Protein Families:	Druggable Genome, GPCR, Transmembrane
Protein Pathways:	Calcium signaling pathway, Neuroactive ligand-receptor interaction



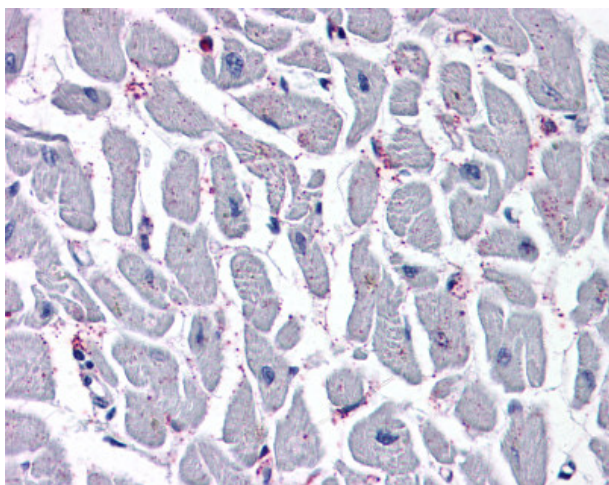
[View online »](#)

**Product images:**

Anti-CYSLTR2 / CYSLTR2 antibody IHC of human liver. Immunohistochemistry of formalin-fixed, paraffin-embedded tissue after heat-induced antigen retrieval.



Anti-CYSLTR2 / CYSLTR2 antibody IHC of human spleen. Immunohistochemistry of formalin-fixed, paraffin-embedded tissue after heat-induced antigen retrieval.



Anti-CYSLTR2 / CYSLTR2 antibody IHC of human heart. Immunohistochemistry of formalin-fixed, paraffin-embedded tissue after heat-induced antigen retrieval.