

## Product datasheet for **TA340953**

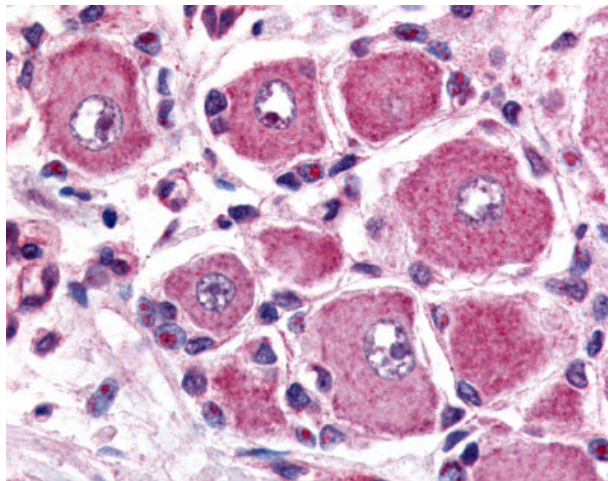
### GPR149 Rabbit Polyclonal Antibody

#### Product data:

Product Type:	Primary Antibodies
Applications:	IHC
Recommended Dilution:	IHC-P (2.5 - 5 µg/ml)
Reactivity:	Human (Predicted: Bovine, Dog, Pig)
Host:	Rabbit
Clonality:	Polyclonal
Immunogen:	GPR149 / PGR10 antibody was raised against synthetic 16 amino acid peptide from C-terminus of human GPR149. Percent identity with other species by BLAST analysis: Human, Gorilla, Gibbon, Marmoset (100%); Bovine, Dog, Elephant, Pig (94%); Bat, Panda, Rabbit, Horse (88%).
Formulation:	PBS, 0.1% sodium azide.
Concentration:	lot specific
Purification:	Immunoaffinity purified
Conjugation:	Unconjugated
Storage:	Store at -20°C as received.
Stability:	Stable for 12 months from date of receipt.
Gene Name:	G protein-coupled receptor 149
Database Link:	<a href="#">NP_001033794</a> <a href="#">Entrez Gene 477119 Dog</a> <a href="#">Entrez Gene 344758 Human</a> <a href="#">Q86SP6</a>
Synonyms:	IEDA; PGR10
Protein Families:	Druggable Genome, GPCR, Transmembrane



[View online »](#)

**Product images:**

Anti-GPR149 antibody IHC of human spinal cord, dorsal root ganglion. Immunohistochemistry of formalin-fixed, paraffin-embedded tissue after heat-induced antigen retrieval.