

## Product datasheet for **TA340950**

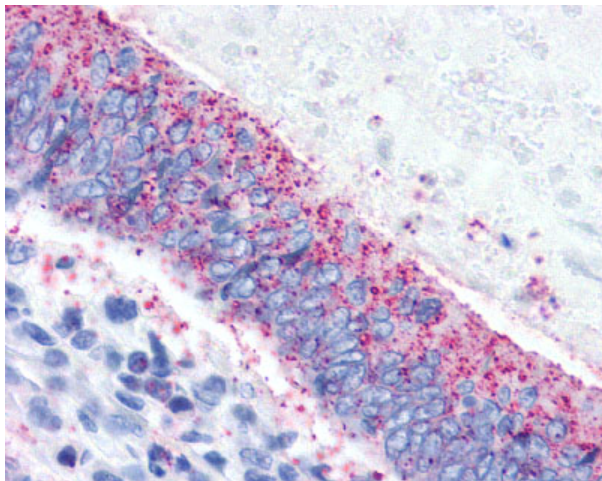
### Corticotropin Releasing Factor Receptor 2 (CRHR2) Rabbit Polyclonal Antibody

#### Product data:

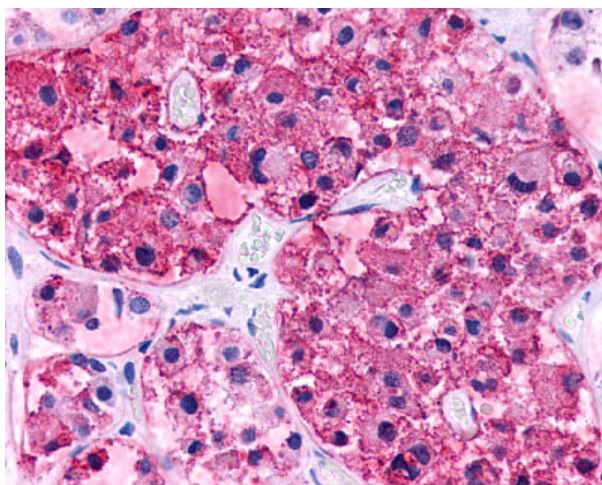
Product Type:	Primary Antibodies
Applications:	IHC
Recommended Dilution:	IHC-P (6 µg/ml)
Reactivity:	Human (Predicted: Mouse, Bovine, Dog, Pig, Rabbit)
Host:	Rabbit
Clonality:	Polyclonal
Immunogen:	CRHR2 / CRF2 Receptor antibody was raised against synthetic 20 amino acid peptide from N-terminal extracellular domain of human CRHR2. Percent identity with other species by BLAST analysis: Human, Gorilla, Gibbon, Monkey, Marmoset, Rat, Horse (100%); Mouse, Bovine, Rabbit (95%); Dog, Pig (90%); Panda, Bat (85%).
Formulation:	PBS, 0.1% sodium azide.
Concentration:	lot specific
Purification:	Immunoaffinity purified
Conjugation:	Unconjugated
Storage:	Store at -20°C as received.
Stability:	Stable for 12 months from date of receipt.
Gene Name:	corticotropin releasing hormone receptor 2
Database Link:	<a href="#">NP_001874</a> <a href="#">Entrez Gene 12922 Mouse</a> <a href="#">Entrez Gene 482384 Dog</a> <a href="#">Entrez Gene 1395 Human Q13324</a>
Synonyms:	CRF-RB; CRF2; CRFR2; HM-CRF
Protein Families:	Druggable Genome, Transmembrane
Protein Pathways:	Neuroactive ligand-receptor interaction



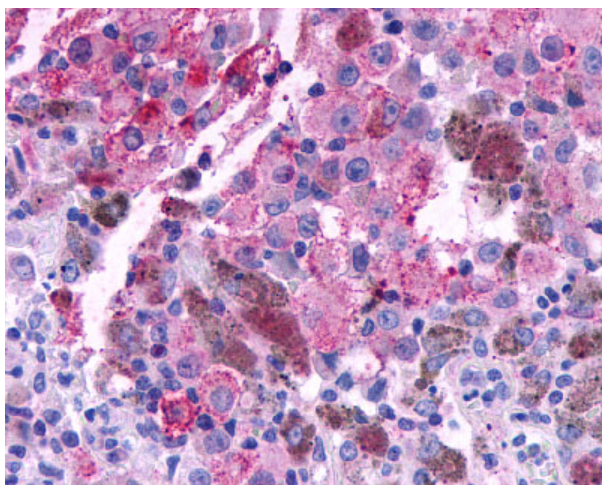
[View online »](#)

**Product images:**

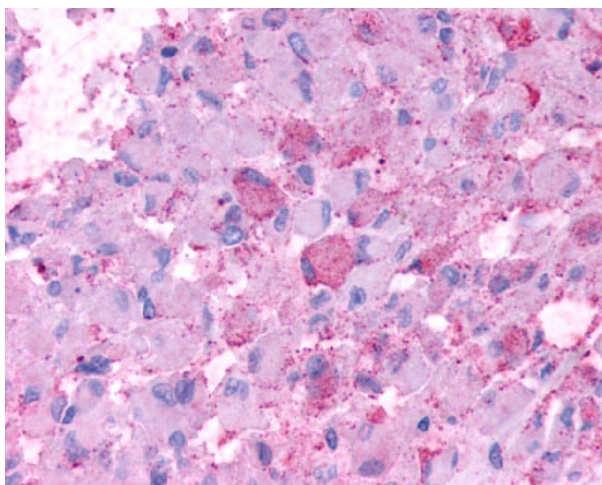
Anti-CRHR2 / CRF2 Receptor antibody IHC of human Colon, Carcinoma. Immunohistochemistry of formalin-fixed, paraffin-embedded tissue after heat-induced antigen retrieval.



Anti-CRHR2 antibody IHC of human brain, pituitary. Immunohistochemistry of formalin-fixed, paraffin-embedded tissue after heat-induced antigen retrieval.



Anti-CRHR2 / CRF2 Receptor antibody IHC of human Skin, Melanoma. Immunohistochemistry of formalin-fixed, paraffin-embedded tissue after heat-induced antigen retrieval.



Anti-CRHR2 / CRF2 Receptor antibody IHC of human Brain, Glioblastoma. Immunohistochemistry of formalin-fixed, paraffin-embedded tissue after heat-induced antigen retrieval.