

## Product datasheet for **TA340947**

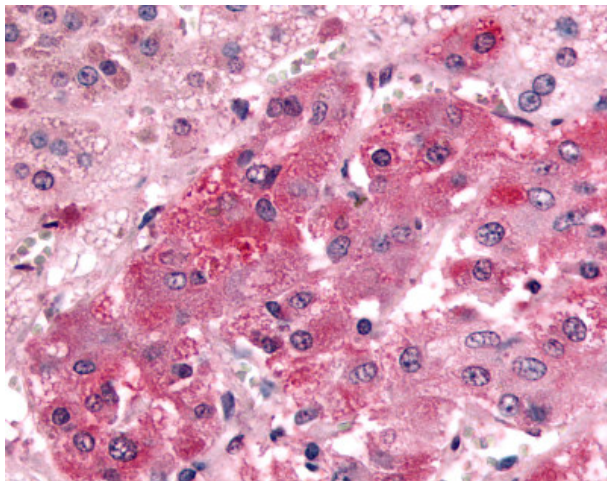
### GPR108 Rabbit Polyclonal Antibody

#### Product data:

Product Type:	Primary Antibodies
Applications:	IHC
Recommended Dilution:	IHC-P (20 µg/ml)
Reactivity:	Human (Predicted: Monkey, Pig)
Host:	Rabbit
Clonality:	Polyclonal
Immunogen:	GPR108 antibody was raised against synthetic 18 amino acid peptide from 1st cytoplasmic domain of human GPR108. Percent identity with other species by BLAST analysis: Human (100%); Gorilla, Monkey, Marmoset, Pig (94%); Mouse, Rat, Bovine, Horse (89%); Panda (83%).
Formulation:	PBS, 0.1% sodium azide.
Concentration:	lot specific
Purification:	Immunoaffinity purified
Conjugation:	Unconjugated
Storage:	Store at -20°C as received.
Stability:	Stable for 12 months from date of receipt.
Gene Name:	G protein-coupled receptor 108
Database Link:	<a href="#">NP_001073921</a> <a href="#">Entrez Gene 703831 Monkey</a> <a href="#">Entrez Gene 56927 Human</a> <a href="#">Q9NPR9</a>
Synonyms:	LUSTR2
Protein Families:	Druggable Genome, Transmembrane



[View online »](#)

**Product images:**

Anti-GPR108 antibody IHC of human adrenal, medulla. Immunohistochemistry of formalin-fixed, paraffin-embedded tissue after heat-induced antigen retrieval.