

Product datasheet for **TA340946**

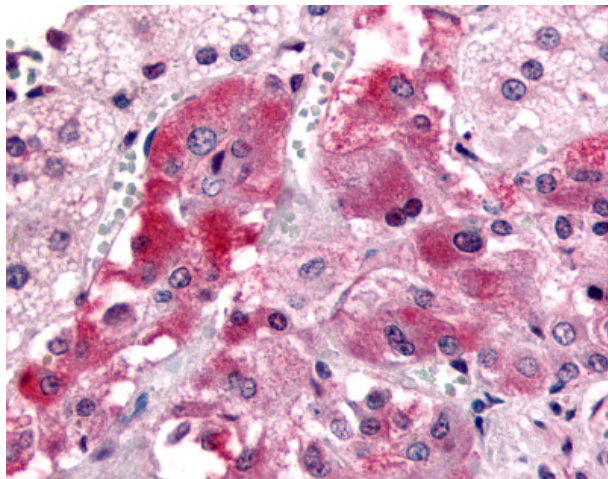
GPR108 Rabbit Polyclonal Antibody

Product data:

Product Type:	Primary Antibodies
Applications:	IHC
Recommended Dilution:	IHC-P (2.4 µg/ml)
Reactivity:	Human (Predicted: Monkey, Rat, Dog, Hamster, Horse)
Host:	Rabbit
Clonality:	Polyclonal
Immunogen:	GPR108 antibody was raised against synthetic 18 amino acid peptide from 1st cytoplasmic domain of human GPR108. Percent identity with other species by BLAST analysis: Human, Gorilla, Marmoset (100%); Monkey, Rat, Hamster, Dog, Horse (94%); Mouse, Panda, Bovine, Pig (89%).
Formulation:	PBS, 0.1% sodium azide.
Concentration:	lot specific
Purification:	Immunoaffinity purified
Conjugation:	Unconjugated
Storage:	Store at -20°C as received.
Stability:	Stable for 12 months from date of receipt.
Gene Name:	G protein-coupled receptor 108
Database Link:	NP_001073921 Entrez Gene 316136 Rat Entrez Gene 476727 Dog Entrez Gene 703831 Monkey Entrez Gene 56927 Human Q9NPR9
Synonyms:	LUSTR2
Protein Families:	Druggable Genome, Transmembrane



[View online »](#)

Product images:

Anti-GPR108 antibody IHC of human adrenal, medulla. Immunohistochemistry of formalin-fixed, paraffin-embedded tissue after heat-induced antigen retrieval.