

## Product datasheet for **TA340945**

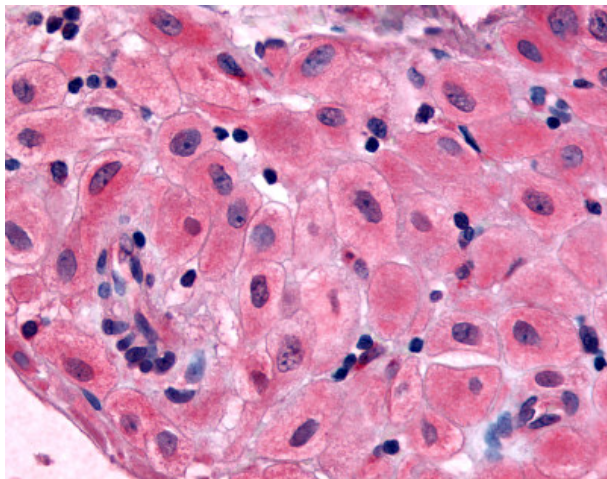
### Bombesin Receptor 3 (BRS3) Rabbit Polyclonal Antibody

#### Product data:

Product Type:	Primary Antibodies
Applications:	IHC
Recommended Dilution:	IHC-P (2.5 µg/ml)
Reactivity:	Human
Host:	Rabbit
Clonality:	Polyclonal
Immunogen:	BRS3 / BRS-3 antibody was raised against synthetic 15 amino acid peptide from 2nd extracellular domain of human BRS3. Percent identity with other species by BLAST analysis: Human, Gorilla, Gibbon, Marmoset, Bat (100%); Monkey, Hamster, Rabbit (87%); Mouse, Rat (80%).
Formulation:	PBS, 0.1% sodium azide.
Concentration:	lot specific
Purification:	Immunoaffinity purified
Conjugation:	Unconjugated
Storage:	Store at -20°C as received.
Stability:	Stable for 12 months from date of receipt.
Gene Name:	bombesin like receptor 3
Database Link:	<a href="#">NP_001718</a> <a href="#">Entrez Gene 680 Human</a> <a href="#">P32247</a>
Synonyms:	BB3; BB3R
Protein Families:	Druggable Genome, GPCR, Transmembrane
Protein Pathways:	Neuroactive ligand-receptor interaction



[View online »](#)

**Product images:**

Anti-BRS3 antibody IHC of human uterus, pregnant. Immunohistochemistry of formalin-fixed, paraffin-embedded tissue after heat-induced antigen retrieval.