

## Product datasheet for **TA340944**

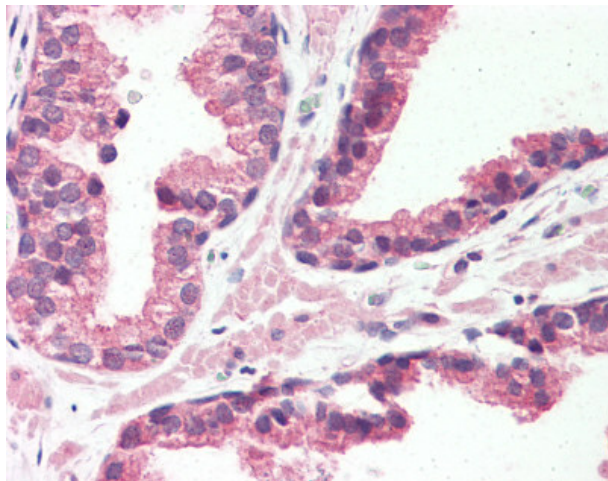
### GPR126 (ADGRG6) Rabbit Polyclonal Antibody

#### Product data:

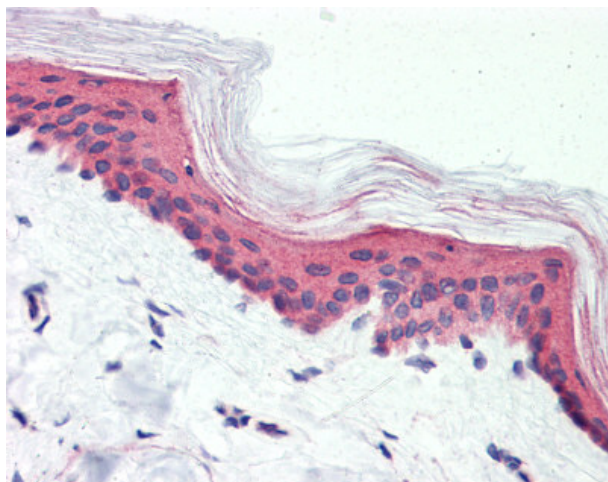
Product Type:	Primary Antibodies
Applications:	IHC
Recommended Dilution:	IHC-P (10 µg/ml)
Reactivity:	Human
Host:	Rabbit
Clonality:	Polyclonal
Immunogen:	DREG / GPR126 antibody was raised against synthetic 18 amino acid peptide from N-terminal extracellular domain of human GPR126. Percent identity with other species by BLAST analysis: Gorilla, Gibbon, Monkey, Marmoset, Mouse, Rat, Hamster, Elephant, Panda, Bovine, Dog, Bat, Horse, Rabbit, Opossum, Turkey, Chicken (100%); Human, Lizard (94%); Xenopus, Stickleback, Pufferfish, Zebrafish (83%).
Formulation:	PBS, 0.1% sodium azide.
Concentration:	lot specific
Purification:	Immunoaffinity purified
Conjugation:	Unconjugated
Storage:	Store at -20°C as received.
Stability:	Stable for 12 months from date of receipt.
Gene Name:	adhesion G protein-coupled receptor G6
Database Link:	<a href="#">NP_001027566</a> <a href="#">Entrez Gene 57211 Human</a> <a href="#">Q86SQ4</a>
Synonyms:	APG1; DREG; GPR126; PS1TP2; STQTL1; VIGR
Note:	Proteinase K treatment is required for antigen retrieval.
Protein Families:	Druggable Genome, GPCR, Transmembrane



[View online »](#)

**Product images:**

Anti-GPR126 antibody IHC of human prostate. Immunohistochemistry of formalin-fixed, paraffin-embedded tissue after heat-induced antigen retrieval.



Anti-GPR126 antibody IHC of human skin. Immunohistochemistry of formalin-fixed, paraffin-embedded tissue after heat-induced antigen retrieval.