

Product datasheet for **TA340942**

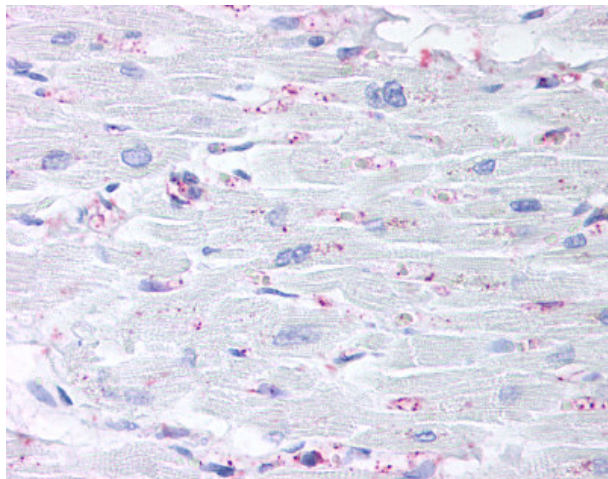
CysLT2 (CYSLTR2) Rabbit Polyclonal Antibody

Product data:

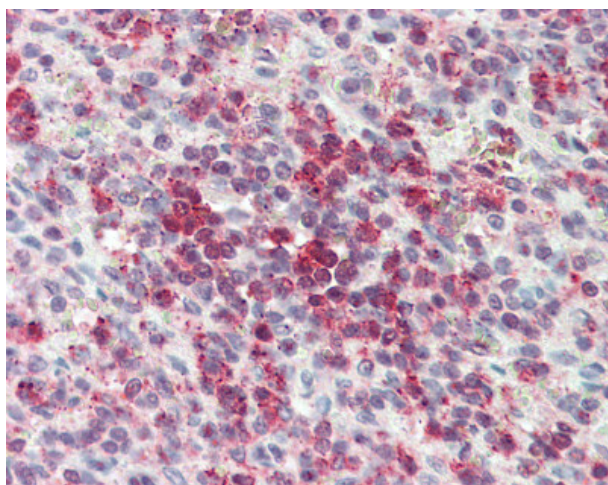
Product Type:	Primary Antibodies
Applications:	IHC
Recommended Dilution:	IHC-P (5 µg/ml)
Reactivity:	Human
Host:	Rabbit
Clonality:	Polyclonal
Immunogen:	CYSLT2 / CYSLTR2 antibody was raised against synthetic 20 amino acid peptide from C-terminal cytoplasmic domain of human CYSLTR2 / CYSLT2. Percent identity with other species by BLAST analysis: Human (100%); Gorilla, Gibbon (95%); Marmoset, Pig (80%).
Formulation:	PBS, 0.1% sodium azide.
Purification:	Immunoaffinity purified
Conjugation:	Unconjugated
Storage:	Store at -20°C as received.
Stability:	Stable for 12 months from date of receipt.
Gene Name:	cysteinyl leukotriene receptor 2
Database Link:	NP_065110 Entrez Gene 57105 Human Q9NS75
Synonyms:	CYSLT2; CYSLT2R; GPCR21; HG57; hGPCR21; HPN321; KPG_011; PSEC0146
Protein Families:	Druggable Genome, GPCR, Transmembrane
Protein Pathways:	Calcium signaling pathway, Neuroactive ligand-receptor interaction



[View online »](#)

Product images:

Anti-CYSLTR2 / CYSLT2 antibody IHC of human heart. Immunohistochemistry of formalin-fixed, paraffin-embedded tissue after heat-induced antigen retrieval.



Anti-CYSLTR2 / CYSLT2 antibody IHC of human spleen. Immunohistochemistry of formalin-fixed, paraffin-embedded tissue after heat-induced antigen retrieval.