

Product datasheet for **TA340941**

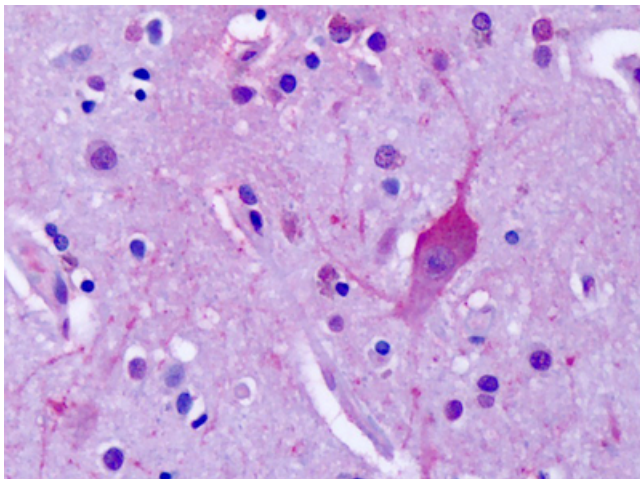
Metabotropic Glutamate Receptor 4 (GRM4) Rabbit Polyclonal Antibody

Product data:

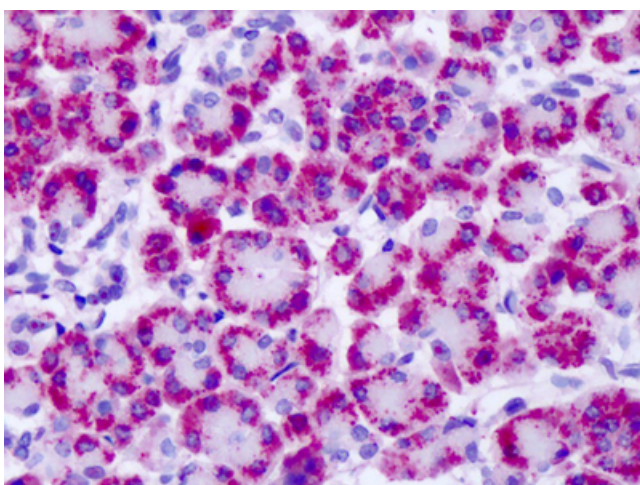
Product Type:	Primary Antibodies
Applications:	IHC
Recommended Dilution:	IHC-P (19 µg/ml), WB
Reactivity:	Human (Predicted: Rat, Dog, Hamster)
Host:	Rabbit
Clonality:	Polyclonal
Immunogen:	GRM4 / MGLUR4 antibody was raised against synthetic 16 amino acid peptide from C-terminus of human GRM4 / MGLUR4. Percent identity with other species by BLAST analysis: Human, Chimpanzee, Gorilla, Gibbon, Monkey, Mouse, Rabbit, Pig (100%); Rat, Hamster, Dog (94%); Horse, Opossum (88%); Turkey, Chicken (81%).
Formulation:	PBS, 0.1% sodium azide.
Concentration:	lot specific
Purification:	Immunoaffinity purified
Conjugation:	Unconjugated
Storage:	Store at -20°C as received.
Stability:	Stable for 12 months from date of receipt.
Gene Name:	glutamate metabotropic receptor 4
Database Link:	NP_000832 Entrez Gene 24417 Rat Entrez Gene 481749 Dog Entrez Gene 2914 Human Q14833
Synonyms:	GPRC1D; mGlu4; MGLUR4
Protein Families:	Druggable Genome, GPCR, Transmembrane
Protein Pathways:	Neuroactive ligand-receptor interaction, Taste transduction



[View online »](#)

Product images:

Anti-MGLUR4 antibody IHC of human brain, cortex, neurons. Immunohistochemistry of formalin-fixed, paraffin-embedded tissue after heat-induced antigen retrieval. Antibody dilution 19 ug/ml.



Anti-MGLUR4 antibody IHC of human pancreas. Immunohistochemistry of formalin-fixed, paraffin-embedded tissue after heat-induced antigen retrieval. Antibody dilution 19 ug/ml.