

Product datasheet for **TA340940**

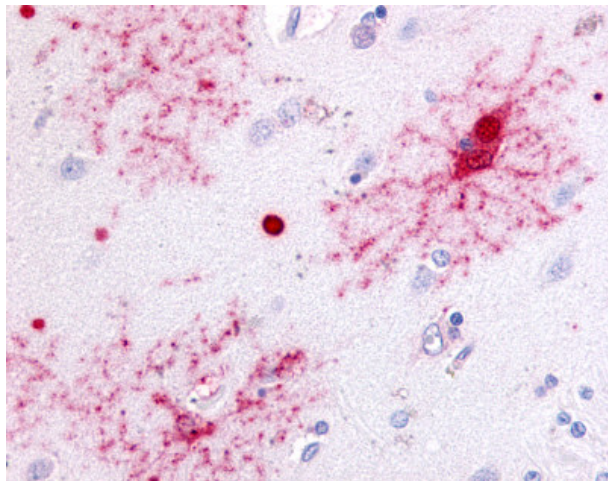
GPR37 Rabbit Polyclonal Antibody

Product data:

Product Type:	Primary Antibodies
Applications:	IHC
Recommended Dilution:	IHC-P (20 µg/ml)
Reactivity:	Human
Host:	Rabbit
Clonality:	Polyclonal
Immunogen:	PAEL Receptor / GPR37 antibody was raised against synthetic 16 amino acid peptide from N-terminal extracellular domain of human GPR37. Percent identity with other species by BLAST analysis: Human, Gorilla (100%); Monkey, Rabbit (88%); Gibbon, Bovine (81%).
Formulation:	PBS, 0.1% sodium azide.
Concentration:	lot specific
Purification:	Immunoaffinity purified
Conjugation:	Unconjugated
Storage:	Store at -20°C as received.
Stability:	Stable for 12 months from date of receipt.
Gene Name:	G protein-coupled receptor 37
Database Link:	NP_005293 Entrez Gene 2861 Human O15354
Synonyms:	EDNRBL; hET(B)R-LP; PAELR
Protein Families:	Druggable Genome, GPCR, Transmembrane
Protein Pathways:	Parkinson's disease



[View online »](#)

Product images:

Anti-GPR37 antibody IHC of human brain.
Immunohistochemistry of formalin-fixed,
paraffin-embedded tissue after heat-induced
antigen retrieval.