

## Product datasheet for **TA340938**

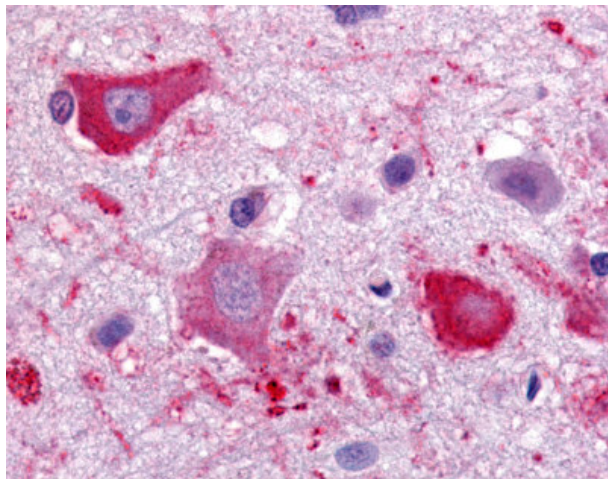
### CMKLR1 Rabbit Polyclonal Antibody

#### Product data:

Product Type:	Primary Antibodies
Applications:	IHC
Recommended Dilution:	IHC-P (5 µg/ml)
Reactivity:	Human (Predicted: Monkey, Rabbit)
Host:	Rabbit
Clonality:	Polyclonal
Immunogen:	CHEMR23 / CMKLR1 antibody was raised against synthetic 19 amino acid peptide from C-terminal cytoplasmic domain of human CMKLR1. Percent identity with other species by BLAST analysis: Human, Gibbon (100%); Marmoset, Rabbit (95%); Horse (84%).
Formulation:	PBS, 0.1% sodium azide.
Concentration:	lot specific
Purification:	Immunoaffinity purified
Conjugation:	Unconjugated
Storage:	Store at -20°C as received.
Stability:	Stable for 12 months from date of receipt.
Gene Name:	chemerin chemokine-like receptor 1
Database Link:	<a href="#">NP_004063</a> <a href="#">Entrez Gene 706223 Monkey</a> <a href="#">Entrez Gene 1240 Human</a> <a href="#">Q99788</a>
Synonyms:	CHEMERINR; ChemR23; DEZ; RVER1
Protein Families:	Druggable Genome, GPCR, Transmembrane



[View online »](#)

**Product images:**

Anti-CMKLR1 antibody IHC of human brain, cortex. Immunohistochemistry of formalin-fixed, paraffin-embedded tissue after heat-induced antigen retrieval.