

Product datasheet for **TA340928**

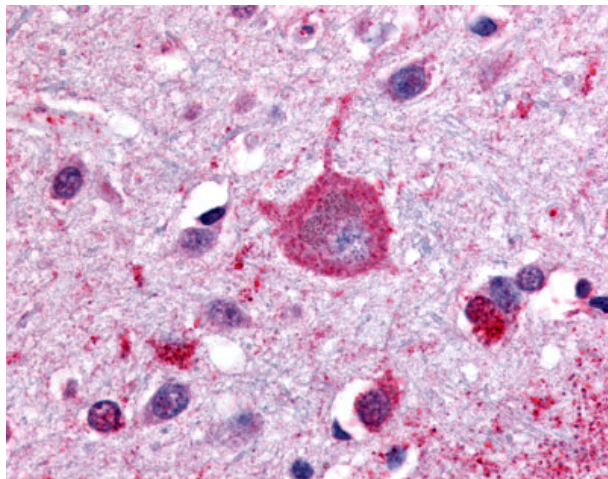
GPRC5B Rabbit Polyclonal Antibody

Product data:

Product Type:	Primary Antibodies
Applications:	IHC
Recommended Dilution:	IHC-P (20 µg/ml)
Reactivity:	Human (Predicted: Mouse, Rat, Bovine, Dog, Horse, Pig, Rabbit, Chicken, Xenopus, Zebrafish)
Host:	Rabbit
Clonality:	Polyclonal
Immunogen:	RAIG2 / GPRC5B antibody was raised against synthetic 16 amino acid peptide from C-terminus of human GPRC5B. Percent identity with other species by BLAST analysis: Human, Gorilla, Orangutan, Gibbon, Monkey, Marmoset (100%); Mouse, Rat, Dog, Bovine, Elephant, Panda, Horse, Rabbit, Pig, Opossum, Turkey, Chicken, Xenopus, Pufferfish, Zebrafish, Stickleback (94%).
Formulation:	PBS, 0.1% sodium azide.
Concentration:	lot specific
Purification:	Immunoaffinity purified
Conjugation:	Unconjugated
Storage:	Store at -20°C as received.
Stability:	Stable for 12 months from date of receipt.
Gene Name:	G protein-coupled receptor class C group 5 member B
Database Link:	NP_057319 Entrez Gene 64297 Mouse Entrez Gene 293546 Rat Entrez Gene 100856475 Dog Entrez Gene 51704 Human Q9NZH0
Synonyms:	RAIG-2; RAIG2
Protein Families:	Druggable Genome



[View online »](#)

Product images:

Anti-GPCR5B antibody IHC of human brain, cortex. Immunohistochemistry of formalin-fixed, paraffin-embedded tissue after heat-induced antigen retrieval.