

Product datasheet for **TA340927**

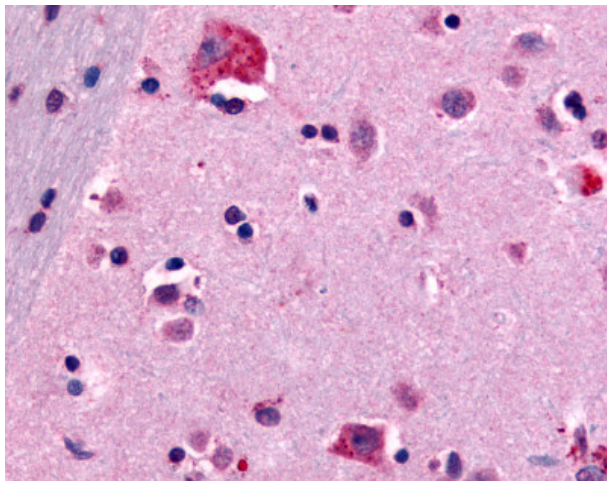
Cannabinoid Receptor I (CNR1) Rabbit Polyclonal Antibody

Product data:

Product Type:	Primary Antibodies
Applications:	IHC
Recommended Dilution:	IHC-P (10 µg/ml)
Reactivity:	Human (Predicted: Monkey, Pig, Chicken)
Host:	Rabbit
Clonality:	Polyclonal
Immunogen:	CNR1 / CB1 antibody was raised against synthetic 20 amino acid peptide from N-terminal extracellular domain of human CNR1 / CB1. Percent identity with other species by BLAST analysis: Human, Chimpanzee, Gorilla, Monkey, Mouse, Rat, Hamster, Panda, Dog, Bat, Cat, Horse (100%); Marmoset, Pig, Turkey, Zebra finch, Chicken (95%); Opossum, Platypus (90%); Bovine, Lizard (85%).
Formulation:	PBS, 0.1% sodium azide.
Concentration:	lot specific
Purification:	Immunoaffinity purified
Conjugation:	Unconjugated
Storage:	Store at -20°C as received.
Stability:	Stable for 12 months from date of receipt.
Gene Name:	cannabinoid receptor 1 (brain)
Database Link:	NP_001153698 Entrez Gene 574142 Monkey Entrez Gene 1268 Human P21554
Synonyms:	CANN6; CB-R; CB1; CB1A; CB1K5; CB1R; CNR
Protein Families:	Druggable Genome, GPCR, Transmembrane
Protein Pathways:	Neuroactive ligand-receptor interaction



[View online »](#)

Product images:

Anti-CNR1 / CB1 antibody IHC of human brain, neurons and glia. Immunohistochemistry of formalin-fixed, paraffin-embedded tissue after heat-induced antigen retrieval.